

62.43

# Noweta Gardens

ST. CHARLES,

MINNESOTA

GLADS  
1956

LIBRARY  
RECEIVED  
★ JAN 10 1956 ★  
U.S. Department of Agriculture





# All American Glads

## for 1956

**Appleblossom AAGs** (Patent Applied for) (460)  
(Baerman-Fischer, 1956) (65 days) (Beauty's Blush x Rose Charm)

This exquisitely tinted gladiolus has been a special pride at Noweta Gardens ever since it bloomed for the first time as a seedling. We still recall our astonishment at the half pint of bulblets that were harvested from the original bulb. We have been completely satisfied with its performance each blooming season since. Appleblossom has the utmost delicacy of coloring, the predominating hue being a snowy white with an exquisite flush or corona of cool rose-pink at the edge of the florets. Eight to ten trimly tailored, recurved florets are open at once on tall, 5-foot spikes. It is an easy grower, remarkably heat resistant and a "first early." Our seedling acres and trial grounds scarcely showed a bit of color last summer when Appleblossom was in full bloom. Viewed in the row as shown on page 5 one can't help but feel that Appleblossom is truly an All American. We are quite happy with our illustration on the cover.

**Royal Stewart AAGs** (Plant Patent No. 1339)  
(450) (Pommert, 1956) (75 days) (Red Charm x Seedling)

Royal Stewart has made an excellent account of itself in our gardens. It has further earned an exceptionally fine performance record in the extensive test program set up by AAGS. Consistently produces tall, straight spikes that open 8-10 florets in a formal, double-row placement. Color is a clear, light red. The picture on page 4 is quite an accurate likeness of the variety. Royal Stewart will be an excellent exhibition variety and a frequent winner.

### PRICES ON ALL-AMERICAN GLADS

Large bulbs only, each \$1.00; 3 for \$2.50  
6 for \$4.75 (3 Appleblossom and  
3 Royal Stewart, or 6 of either)

## Noweta Introductions

**Early Purple** ★★ ★ (471) (Fischer, 1956) (70 days)  
(Caribou x Burma)

Early Purple will be of special interest to those of you who are looking for early cut-flowers either for your home garden or for the market. It is an ideal shipping glad consistently producing tall, straight, 5-foot spikes with nary a crook. The lightly ruffled, cream-hthroated light purple florets open well in water; an important factor where spikes are cut in tight bud. At Noweta Gardens, Leamington, Ontario, where Doug Neff specializes in early cut-flowers for shipping, Early Purple receives a top rating. You, too, will be pleased to have this "plum" shaded cutter in your garden. The field performance of Early Purple is near perfect and the propagation is excellent. Makes beautiful bulbs. The modest price of Early Purple will permit you to get a good start in this "bread-winner" now.

**Texas White** ★★ ★ (500) (Fischer, 1956) (95 days)  
(Snow Princess x Evangeline) (Seedling No. 69-49)

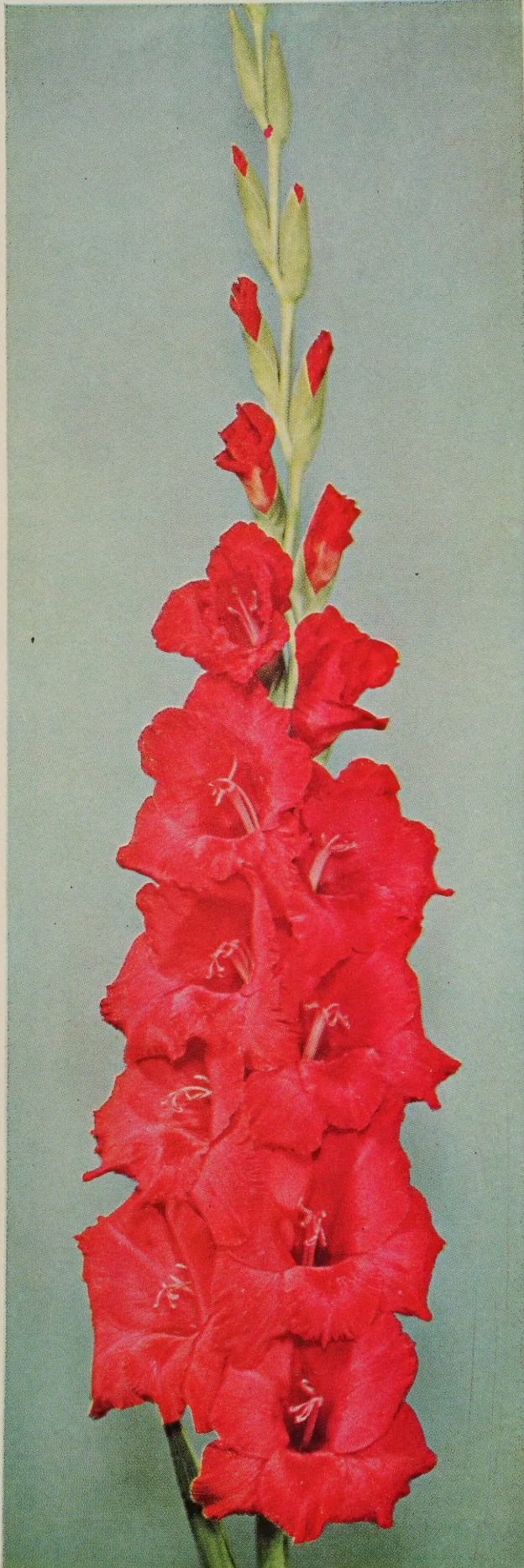
Texas White is just that, a colossal white! Not the ultimate in beauty, but an extremely reliable cut-flower. Named for our Texas friends, Edna and Jessie Lott, who were glad to ship all we could produce to their Texas customers. What it lacks in pulchritude it makes up in rugged vigor. The plants are about the most vigorous in the field. It is a heavier substandard, much larger and taller, more rugged, purer, and somewhat more beautiful Snow Princess. When well grown the spikes are unbelievably huge, the florets measuring 6-7 inches in diameter. During the peak of last summer's heat Texas White was the best performer of them all. Every spike (it cuts well from small, too) was cut for the shipping trade and heralded with a cheer. If you want to "wow" your neighbors; aim for top honors of the show; or, need a good late white cutter, Texas White is a must for you!

### Prices on Early Purple and Texas White

Any size, two for \$1; 12 for \$5; 25 for \$10  
2L, 2M, 3S, 30 Blbts. for \$3  
5L, 5M, 5S, 100 Blbts. for \$6.50  
½ Pint Bulblets for \$12

Front Cover: Rita Millard of St. Charles enjoys a composition of APPLEBLOSSOM.

Left: A Carl Starker Arrangement of ROYAL STEWART, gladiolus leaves and kale.



© Selected Glads, Inc.

Royal Stewart

**Carved Ivory** ★ ★ ★ ★ (306) (Fischer, 1956) (80 days)  
 (Wedgwood x Seedling) (Seedling No. 136-50)

When a seedling consistently puts on a good performance year after year it is bound to be recognized as a possible introduction. But, when in addition to a fine record of performance, a seedling also exhibits great beauty of form and purity of color, it merits our highest praise and recommendation. Carved Ivory is just such a glad; from the rich, creamy-whiteness of its coloring to the delicately chiselled ruffling, Carved Ivory is the personification of near perfection—as near to perfect as we mortals can aspire. We have given it four stars for beauty but, because of its smaller size, only three dots for commercial. (The shipping trade demands large flowering varieties to compensate for some loss in size when glads are cut and opened from tight buds.)

Carved Ivory is an average propagator with good germinating and growing habits. It produces a tall, slender spike of 16-18 buds with 5-6 exquisitely moulded and carved creamy florets open at once. Each spike is so lovely that even though you have but one, you'll enjoy cutting and bringing it into your home. Used in a slender vase with a little foliage it will be a simple but charming composition. With a few more spikes and some additional foliage you are sure to find inspiration for making an arrangement you'll be proud to display. For in the realm of make-up work Carved Ivory is supreme! Its beauty will enhance any spot it adorns.

Any size, each, \$1; 6 for \$5; 12 for \$10  
 1L, 1M, 1S, 10 Blbts. for \$3  
 ½ Pint of Bulblets for \$60

**Golden Hour** ★ ★ ★ ★ (312) (Fischer, 1956) (80 days)  
 (Orange Gold x Little Gold) (Seedling 904-50)

For many years Little Gold has been our favorite small flowering "golden-orange." But, hybridizers are never satisfied: when they find something good they immediately proceed to improve on it. Thus, we have Golden Hour, a taller, larger, more ruffled edition of Little Gold with a slightly heavier stem which allows more water to reach the florets, adding greatly to its opening ability. Golden Hour produces a 16-17 bud spike opening 5-6 florets of good substance and smooth color. It is a better-than-average propagator, an easy grower, making useable spikes from all sizes of bulbs.

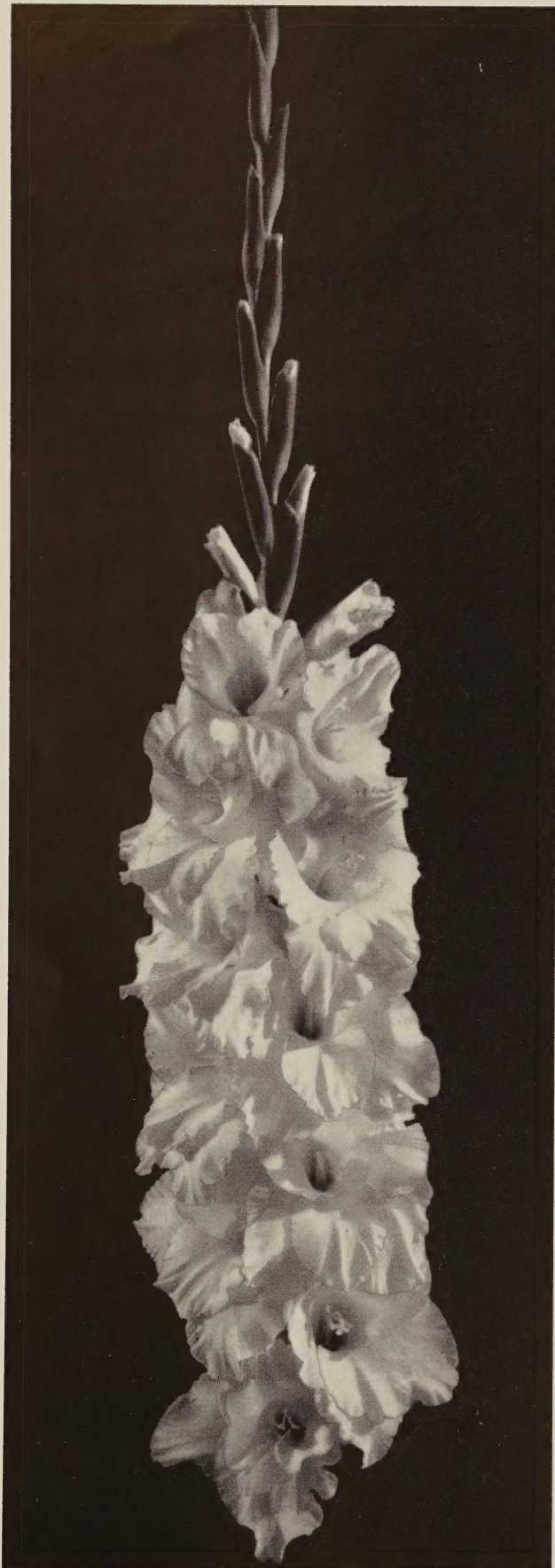
While glads in the "300" size are more apt to be considered purely for their decorative value, we feel that Golden Hour should easily win its way on the show table. Arrangement enthusiasts will enjoy working with this lively golden gem. It is especially attractive in a copper container though it contrasts nicely with green, brown or black. This color lends itself admirably to Autumn-type compositions using cattails, dried materials such as curly dock, sea oats, etc., and colored leaves. Yellow, orange, and maroon shaded zinnias or marigolds would provide added interest. Let your imagination be your guide—we're sure you'll have fun and some striking arrangements to prove you did!

Any size, each, \$1; 6 for \$5; 12 for \$10  
 1L, 1M, 1S, 10 Blbts. for \$3  
 ½ pint of bulblets for \$60

"A real beauty that we fell for was this white seedling, No. 615-50, Snow Velvet. It had a 31-inch head, 24 buds, and about 9 open. A white that is going places." —Marvin and Melvin Schrimpf, Minnesota.



*Appleblossom grows those beautiful  
exhibition spikes easily.*



**Snow Velvet**

**Snow Velvet** ★★☆☆ (400) (Fischer,  
 ●●●● (1956) (80 days)

(Parentage Unknown) (Seedling No. 615-50)

Snow Velvet brings to mind the old Russian Folk Tale of the Little Snow Maiden. She came into being when a lovable, childless couple decided to make a little snow girl after watching the neighboring children fashion a great snow woman. They had so long dreamed of a little girl that out of their tender longing they fashioned a beautiful creature, the loveliest ever seen. As they fondly expressed the wish she suddenly came to life and danced before them, her garments all frosty white and sparkling in the silvery moonlight. But, when spring approached and they wished to keep her she melted away for she was a friend of Frost and Snow.

Like the little Snow Maiden, Snow Velvet is a sparkling, frosty white with no warmth of cream in its make-up, but unlike the Snow Maiden, Snow Velvet revels in the warmth of summer producing a marvelous inflorescence of velvety, ruffled florets—9-11 open on a 22-24 bud flowerhead—just the kind of spikes show enthusiasts like for exhibition. A wonderful glad for wedding decorations; especially useful in basket work. Cuts well from small; propagates well; and, makes strong, healthy, deep-green plants. We have enjoyed watching the development of Snow Velvet ever since it was given the top rating at our first Seedling Meeting in 1951. We are sure that you will receive as much pleasure growing it in your own garden.

Any size, each, \$1; 6 for \$5; 12 for \$10

1L, 1M, 1S, 10 Blbts. for \$3

½ pint of bulblets for \$60

**Campanile** ★★☆☆ (466) (Fischer,  
 ●●●● 1956) (85 days)  
 (Beauty's Blush x Elizabeth the Queen) (Seedling No. 2-49)

Campanile is our answer to the hue and cry for a good, clean true lavender. Not a warm-toned color but a real blue-lavender. It far outshines Elizabeth the Queen, one of its parents, in height and bud count; and, it surpasses Beauty's Blush, the seed parent, and no mean performer by any score, in clarity of coloring and the beauty of its recurved form. From Beauty's Blush it inherits the fine cutting qualities which make it such a promising commercial. After Campanile begins to bloom in mid-season, from large bulbs, it presents a succession of fine, tall, cutting spikes right up to the end of the season when the 6's and 7's are producing their model spikes. Even the bulblets make spikes which the florists call for. Like Beauty's Blush and Sweet Sixteen, it is one of our most rugged growers.

Our description of Campanile would not be complete without some mention of its beauty and appeal. The florets are slightly ruffled and beautifully recurved and somewhat larger than Beauty's Blush. The throat of each is embellished with a large, pure ivory-white blotch. Indeed, a row of Campanile with spike after spike having 8 to 10 open blooms is a wondrous sight, one which we have enjoyed each summer since our stock has increased. Unfortunately, we never have had prime spikes of Campanile in bloom at show times, but, we are sure that it will achieve its share of recognition when the ribbons are awarded.

Any size, two for \$1; 12 for \$5; 25 for \$10

2L, 2M, 3S, 30 Blbts. for \$3

5L, 5M, 5S, 100 Blbts. for \$6.50

½ Pint Bulblets for \$12

"Campanile grew 60" tall, 29 buds, and 8 open, a 28" head. It is just gorgeous."—W. J. Dittman, Michigan.

"Your Campanile, Wild Rose, and Appleblossom are truly gladiolus masterpieces."

—Tom Manley, Pennsylvania.

## SPECIAL OFFERS ON OUR 1956 INTRODUCTIONS

Once again we are offering you the best of what is new from our own gardens. This has been the most popular feature in our catalogue. As our past introductions have been among the world's best we feel that these current offerings will be no less popular when viewed in the gardens of our customers. They have been tested for at least five years in our test plots, and the scores received from the Hybridizers Guild, North America Gladiolus Council Trial Grounds and the Canadian Trial Grounds have upheld our judgments. We predict you'll be thrilled with these new beauty's when they bloom in your garden!

<b>TREASURE CHEST COLLECTION A</b>	}	2 Bulbs, Any Size, Campanile .....	\$ 1.00	}	\$6.00 Value for \$5.00
		1 Bulb, Any Size, Carved Ivory .....	1.00		
		2 Bulbs, Any Size, Early Purple .....	1.00		
		1 Bulb, Any Size, Golden Hour .....	1.00		
		1 Bulb, Any Size, Snow Velvet .....	1.00		
		2 Bulbs, Any Size, Texas White .....	1.00		
<b>TREASURE CHEST COLLECTION B</b>	}	Double Collection .....	\$12.00	}	\$12 Value for \$9.00
<b>TREASURE CHEST COLLECTION C</b>		Triple Collection .....	\$18.00		\$18 Value for \$13.50
<b>HOME GARDENER'S COLLECTION</b>	}	40 Bulblets of Each of the Above 6 Varieties .....	\$13.50	}	\$22.50 Value for \$16.00
		1 L and 1 M of Each of the Above 6 Varieties .....	\$ 9.00		
<b>SMALL GROWER'S COLLECTION</b>	}	200 Bulblets of Each of the Above 6 Varieties .....	\$40.50	}	\$49.50 Value for \$35.00
		1 L and 1 M of Each of the Above 6 Varieties .....	\$9.00		

"Summer Queen is truly a queen. Dusk, there are no words that do it justice; I love the smoky ones, so Dusk is one I'll treasure a long time. Wild Rose grew the longest spike for me . . . it was well over 36 inches. The color of Wild Rose is very appealing. I had Purple Burma near Snowdrift and the contrast was wonderful. Minaret and Juno are so pretty that it is hard for me to tell which I like best. Orchid Frills is delightful with its delicate orchid coloring and the ruffled affect. Ruffled Dream gets lovelier after cutting and bringing it in the house." —Mrs. Nora Hartwig, Missouri.

"I was so pleased with the glads I ordered from you this spring. Bulbs were splendid. Fire Opal is outstandingly lovely, and I loved Purple Burma." —Mrs. T. C. Lamoreaux, Colorado.

"Purple Burma was a real beauty, with excellent spikes, 21 buds and 7 open, beautifully ruffled florets. I had four bulbs which produced seven tremendous spikes. Summer Queen was queen of them all in my plot this year. Exquisitely beautiful and a wonderful performer. Wild Rose is very well named and showed very good performance here." —H. R. Sanderson, Manitoba.

"I like Fire Opal very much and Ruffled Dream was really a dream. I had a spike of Purple Burma and one of Dusk in my display at the Kitsap County Fair. Dusk sure attracted the Ladies. I received some very fine compliments on Purple Burma. Minaret won me a blue ribbon at the Pacific International Show at Everett this year. Mother Fischer and Sweet Sixteen were very fine this season." —Edgar E. Searls, Washington.

"Then I have a special "Thank you" for sending me Purple Burma as a gift. The flower was magnificent, absolutely perfect, so I am grateful to you for introducing it to me." —Alberta Bowers, Massachusetts.

"This year for the first time I purchased of you 100 small mixed glad bulbs. And what a continued joy they were to my husband and me . . . everyone bloomed—a real thrill on our dining room table all summer. Now last week, mid-October, was the last, and we are really lost without them." —Mrs. C. V. Croll, New Jersey.

"While I had only two bulbs of your Orchid Frills, they both produced beautiful spikes that were eye-catchers as they had good placement, good substance and a color that should be extremely popular for the home and florist." —O. H. Witt, Nebraska.

"Oklahoma had wretched Glad weather last year, but in spite of it our Snowdrift had 22 buds, straight as an arrow in 105 to 108 temperature. No burning. We were thrilled beyond words with it as well as Pink Diamond." —Mrs. C. P. Andrews, Oklahoma.

"Snowdrift is the most beautiful glad I have ever seen. There were two blooms from the one bulb. I love white glads anyway, but this one transcends any I have seen." —Alberta Bowers, Massachusetts.

"Just had to tell you what a wonderful satisfaction my 'little glads' have been. But, this Snowdrift!—Ethereal—you called it—and it is. I was awe-struck! Thank you for producing such beautiful things." —Mrs. Roy A. Wanska, Washington.



**A Carl Starker Masterpiece: six sikes of beautiful JUNO, a few glad and caladium leaves, and six round, snowy dahlias.**

**JUNO SPECIAL: 5L, 5M, 5S (a \$4.50 value) for \_\_\_\_\_ \$2.55**

"With tears in his eyes, one man said of Snowdrift, "Only God could create such a flower."

—Rev. P. H. Beckman, Iowa.

"I brought in the first Pink Diamond yesterday, from a planting of No. 6 bulbs. We have never had anything lovelier in a vase before . . . I can always count on Noweta bulbs."

—Mrs. Samuel E. Powell, North Carolina.

"Of all the purple's that I have grown in the last 36 years, I find your Knighthood king of them all for constitution and color. Beautiful clear Burgonvillia, the same as our creeper."

—E. Moodie, Australia.

"I hope Heaven will be favored with Glads such as yours."

—Mrs. Byron E. Fancy, Ontario.

"The first Juno that bloomed had a 30-inch flower-head, 10 open and 21 buds. We liked it a lot. Its beautiful color is similar to the iris, Tea Rose."

—Marvin and Melvin Schrimpf, Minnesota.

"The most beautiful glad I saw last season was right in my own garden—Pink Diamond! 8 open, 22 buds, 28" head and color!"

—Frank M. Vargas, Vermont.

"We all looked forward to seeing your 1955 Introductions in bloom and were very happy and pleased with them all. But, Purple Burma, Dusk, and Wild Rose were favorites."

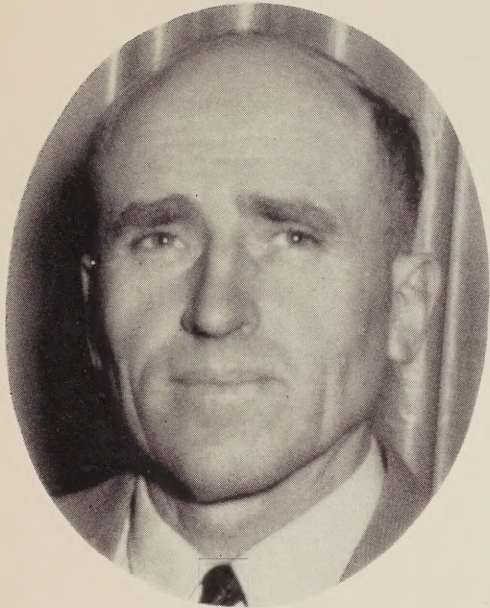
—Rev. P. H. Beckman, Iowa.

"Our Purple Burmas surrounded by White Lace were spectacular! The talk of the neighborhood!!!"

—Mr. and Mrs. D. T. Daggy, Texas.



# Greetings!



**Carl Fischer**

Once again, I extend cordial greetings to all our customers and friends! It is a pleasure, indeed, to present our 1956 catalogue to you and I hope you find it inspiring and interesting. We take joy in sending it to you; it has been a labor of love. I also want to thank my many customers for their valued patronage which has made this catalogue possible. We treasure your orders and strive to serve you as best as is humanly possible.

It gives me great pleasure to introduce Charles "Chuck" Ruble to you. "Chuck" joined our force last April and is here to help serve you better. He formerly owned and operated "Chuck's Glad Patch" at Albert Lea, Minnesota and is well known by many in the gladiolus business. Chuck has grown glads ever since he was a boy; he lives and breathes gladiolus. Miniatures have been a specialty with him and it is largely through his influence that we have increased our listings and have made a special feature of them in the rear of our catalogue. Chuck hopes to step-up our hybridizing program so that better and still more beautiful glads may reach your garden.

Our seedlings were again the high spot of the year. But this was because they were planted early and made a large part of their growth and bloomed before the advent of the summer's heat. By August 1 our seedling area looked like a stubble field. It was all bloomed out! How capricious nature can be! A year ago we just barely had enough blooms in our whole acreage to make it interesting for our visitors during the Central International Show at Rochester on August 7 and 8!

This past summer was the hottest and driest here since I have been in the business—a condition which was general throughout most of the country. Even with irrigation it was impossible to cope with the high temperatures. But, as an old proverb says, "there is no great loss without some small gain," our gain is a splendid bulb crop; the best we have ever grown. About September 1st, having recuperated sufficiently from the summer's heat, we began irrigating in earnest, giving the glads all the water they needed. Thanks to the Maker we were rewarded with a huge quantity of large, round, plump bulbs. I thank Him, too, that irrigation has been made possible.

Even with the dry fall, every bulb was washed and after washing was dipped in a Spergon-DDT solution.



**Charles Ruble**

From here they were quick-dried with temperatures up to 95° so that in 24 hours the husks were "crispy-dry" and looked as if they had just come from the cleaners. After this stage they are placed in a warm, airy room to continue curing until they are ready to be cleaned, graded and stored for the winter.

We try to list the very best varieties in existence, but just because a certain glad is not on our list is no proof that it is not a good one. We usually don't list expensive introductions until they come down in price. Glads perform differently in various sections of the country and in different circumstances from year to year. We spend a considerable amount of money on new varieties for our trial grounds. It is our policy to absorb the disappointments rather than to pass them on to our customers.

For increased success with your glads we suggest a mulch. For 6 years we have grown our choicer varieties and seedlings under a straw and cow manure mulch. Each fall we marvel at the huge, clean, disease-free bulbs. Propagation is so much better, too. We cultivate the ground well when the plants are about 6 inches high and then apply the mulch. It's extra work but it pays big dividends. Keep the soil and root system cool and moist in hot weather and you'll be surprised how loose and pliable the soil remains. I recommend it to my customers. If the manure is not available use just the straw, old hay, or corncobs. Partly decomposed material is preferred.

After each harvest we look back upon the successes of the season or seasons past. Then our minds project into the future and wonder what glorious new developments are still in store for us. Last summer we plowed down part of a crop of hay, fertilized with Vigoro and in early September an 8-10 foot crop of towering sudan grass was turned under for next year's glads. During the waning days of Autumn a marvelous green lawn of rye was growing to further enrich the soil for next summer's beauties. We invite you to come and see the results!

Once again I want to thank you for your many fine letters; your patronage; and, may your glad growings be ever richer and fuller! I breathe a prayer that 1956 may be the best you ever had!

*Carl Fischer*

# Noweta Gardens

"No-we-ta" is the Indian word meaning Beautiful



ST. CHARLES  
MINNESOTA

## THRIPS-FREE BULBS

Before the discovery of DDT (now obtainable at any drug store) thrips, minute sucking insects that silver the foliage and injure the quality of the blooms, were a serious menace to glads. DDT, however, is 100% effective. Immediately after digging and washing our bulbs, we dip or dust them with DDT and also with Spergon to eliminate all thrips and prevent disease. This treatment, coupled with rapid curing in heated curing rooms assures you of the healthiest and handsomest bulbs we are able to produce.

Since we grow our stock in fertile corn-belt loam and harvest only bulbs grown from small bulbs and bulblets, we have only peppy young, high-crowned stock to ship our customers—bulbs that produce long flowerheads the following year.

## INSTRUCTIONS FOR ORDERING BULBS

All orders for \$3.00 or over are POSTPAID. Prices in this list are net. All orders must be accompanied by cash in full. All stock is guaranteed true to name, disease-free, and thrips-free. All stock is offered subject to prior sale. If any of our customers is willing to pay the transportation charges on his order, we will see that there are bulbs of a value much larger than the shipping cost added to the order to offset these charges.

Where bulblets are listed by the packet, 50 to 100 or more will be included in each packet. Excellent value guaranteed.

FIVE BULBS WILL BE SOLD AT ONE-HALF THE PRICE OF TEN, but no single item will be accepted for less than 20 cents, unless quoted. If no 10 price is stated, it may be found by multiplying the price of a single item by 8.

We earnestly urge you to order as early as possible to avoid disappointment. All orders filled in rotation.

If you write us about an order previously given, or if you send us a second order and wish both orders to be shipped together, please mention the date of your first order or date acknowledgment was received.

If your order is partly from the retail prepaid list and partly from the wholesale NOT prepaid list, please include extra postage to cover transportation on the wholesale items.

No orders can be accepted after June 1.

If you are not completely satisfied with your order you will be doing us a favor by writing to us about it.

## BULB SIZES

Bulbs are graded into six different sizes. No. 1 size is 1½ in. and up; No. 2, 1¼ in. to 1½ in. with ¼ in. variation down to No. 6 size, which is ½ in. and under. In the retail list where Large, Medium and Small are used, Large will consist of No. 1 and No. 2 sizes, or No. 1 size as long as they last. Medium consists of No. 3 and No. 4 sizes, or No. 3 size as long as they last. Small sizes consist of No. 5 and No. 6 sizes. Early orders will get preference on the size. If you order Medium sizes for instance, and you get part or all No. 4 bulbs or ¾ in. to 1 in., please do not write us that we have given you the wrong size. It's simply because we are out of No. 3 size, and No. 4 bulbs also go as Medium size. Medium bulbs will almost invariably bloom, although not quite as large a spike can be expected as from a large size. Small-size usually will bloom, but not always.

## PRICE OF CATALOG

Customers receive our catalog from year to year automatically and without charge. If you desire an additional copy for yourself or for a friend, kindly send 25c. (Catalogs actually cost us much more than this nominal charge.)

If you have sent for our catalog without subsequently ordering, your name will be dropped from our mailing list unless you request our catalog anew and enclose 25c.

## CULTURAL DIRECTIONS

A sheet of complete cultural directions will be sent with every order.

## KODACHROME SLIDES

We have several sets of kodachrome slides each showing recent glad introductions, artistic glad arrangements, and miscellaneous scenes. Some of these sets are standard 35m color transparencies suitable for projection. Others are three-dimensional STEREO kodachromes with which we furnish hand viewers. There are approximately 150-200 slides in each set. No new pictures this year. Rental fee to either flower clubs or individuals is \$3.00. Both sets for \$5.00. Let us know in good season the dates on which you would like to rent our slides. AFTER VIEWING THEM, PLEASE FORWARD THEM PROMPTLY SO THAT SOME OTHER FLOWER CLUB OR GLAD SOCIETY MAY HAVE A CHANCE TO ENJOY THEM ON A SCHEDULED DATE.

THIS LIST SUPERCEDES ALL PREVIOUS LISTS.

# Headliner Glads for 1956

*A Critical Selection of the World's Finest Glad Varieties*

(Miniatures listed on pages 34-35 and 38-39)

Glad fans generally want to know three things about a variety which they have not yet had a chance to try out for themselves: 1. How beautiful is it? 2. How valuable is it as a cut-flower? (i.e., how does it rate in performance?) and 3. How large is it?

The generally adopted 500, 400, 300, 200, 100 size classification, explained on colored sheet, accurately describes the floret size. To assist in respect to beauty and cut-flower value, we devised the following rating system and inaugurated it six years ago.

Because glads often vary in performance from place to place and from year to year, especially when not acclimated, I want it to be clear that I am not presenting these ratings in a dogmatic spirit. Others are fully as much entitled to their opinions of varieties as we are. Last year's ratings were considerably higher than those presented on the following pages. We tried to be absolutely realistic about the ratings letting the ax fall where it may. We sincerely feel that a more propitious blooming season will raise some of the ratings considerably.

## KEY

- ★ moderately beautiful
- ★ ★ beautiful
- ★ ★ ★ very beautiful
- ★ ★ ★ ★ supremely beautiful
- suitable for home garden only
- • good local cut-flower
- • • very good cut-flower type
- • • • excellent commercial type

**A. B. Coutts** ★ ★ ★ (516) (Coutts, 1953)  
• • • (85 days) This tall, broad-petalled giant is winning its way as a leading buff. Indeed it is challenging Patrol which has lead its color class for many years. It is a pleasing shade of apricot buff blending to yellow deep in the throat. With us, a moderate propagator.

(L 1-.50; 10-4.00) (M 1-.35; 10-2.80)  
(Blbts. 10-.40; 50-1.75)

**Abu Hassan** ★ ★ ★ (378) (K. & M., 1946) (80 days)

(Pelegrina x Amur) Introduced ten years ago this deep violet has been at the head of its class ever since. Here is a class that challenges the hybridizer's skill as outstanding seedlings in this color are hard to get. Abu Hassan is a glossy deep violet, a color which is most useful in floral work. A few spikes in a mixed bouquet give contrast and color balance. Used in arrangements with yellows, lavenders, or pastel rose shades it gives just the right accent to an interesting ensemble. You'll not be disappointed with this inky colored glad.

(L 2-.30; 10-1.20) (M 10-.80)

**Ace of Spades** ★ ★ ★ (454) (Sisson, 1950) (85 days)

(King Lear x Preussen's Gloria) This tall, black-red has a glistening sheen to dress up its rather plain form. Well named, its buds are almost as black as the "Ace of Spades". An easy grower; good propagator. An excellent garden novelty.

(L 1-.25; 10-2.00) (M 2-.30; 10-1.20)  
(S 10-.80) (Blbts. 15-.25; 100-1.00)

**Aureole** ★ ★ ★ ★ (410) (R. Pruitt, 1948)  
• • (80 days) Consistently

a best seller for us, Aureole is one of our most heavily ruffled glads. The nicely rounded, broad florets are well attached to the slender, medium height spikes. For florists work and your own home decoration you will find this shade of yellow most useful.

(L 2-.30; 10-1.20) (M 10-.80)  
(S 10-.50) (Blbts. Pkg. .30)

**Autumn Moon** ★ ★ • (510) (Fischer, 1951) (75 days)

(White Gold X (Autumn Gold x Cream Seedling of Gloaming)) Looking for an early yellow cut-flower? Try Autumn Moon! Its clear, light yellow is a desirable florist color and its height and size make it an ideal shipping glad.

(L 2-.30; 10-1.20) (M 10-.80)  
(S 10-.50) (Blbts. Pkg. .30)

**Beauty's Blush** ★ ★ ★ (440) (Fischer, 1947) (75 days)

(Margaret Beaton x Choice Seedling) Each year we marvel at the versatility of this hardy glad. The tall, stately, cool pastel spikes are a welcome sight when they appear early in the blooming season. As the weeks fly by Beauty's Blush continues to produce quality blooms from successively smaller bulb sizes. Our admiration increases during the last days before frost writes the finis to another colorful gladiolus year. We are convinced that Beauty's Blush does its best from the small bulbs in bloom at this time. You will be, too, when you see the sturdy plants and model spikes growing from the No. 5 or No. 6 bulbs. We space them a little farther apart than most small bulbs to give the husky plants all the room they need to develop fully. All our praises for this variety cannot end without mention of its wholesome type of beauty and usefulness. It wears well! In fact, it has long been the backbone of our cutting garden.

(L 2-.30; 10-1.20) (M 10-.80)  
(S 10-.50) (Blbts. Pkg. .30)

"We have our own florist shop and I don't know what we would have done without Beauty's Blush . . . it was our most valuable cutter. We got a lot of good from White Lace and Mother Fischer. My all time favorite is Friendship." —Earl Main, Michigan.

**Betty Duncan** ★ ★ ★ (422) (Benedict, 1949) (85 days)

(Donna x Royal Gold) No gladiolus collection is complete without precisely styled, golden-throated, orange Betty Duncan. Cut-flower growers can afford to stock it in quantity. Betty Duncan cuts well from small bulbs. A welcome color to blend with autumn shades.

(L 2-.30; 10-1.20) (M 10-.80)  
(S 10-.50) (Blbts. Pkg. .30)

**Boldface** ★ ★ ★ (533) (Evans, 1947) (80 days)

Here is a glad whose name aptly describes its unusual marking. The red blotch makes a sharp contrast on the white throat. This again is surrounded by the salmon-scarlet of the floret creating a striking combination. Boldface is a fine exhibition variety opening 6 to 8 formally placed florets on substantial spikes. Often wins top honors at the shows.

(L 2-.30; 10-1.20) (M 10-.80)  
(S 10-.50) (Blbts. Pkg. .30)

**Burma** ★ ★ ★ ★ (562) (Palmer, 1943) (85 days) (Premier Henry x King Lear) One of the oldest glads on our list, this heavily ruffled and fluted, rich rose-red glad ranks far ahead of its nearest rivals for both exhibition and commercial use in the latest symposium compiled by the North American Gladiolus Council. Well grown spikes of Burma offer stiff competition on the show table. We have an excellent strain of tall-growing, regal Burma.

(L 2-.30; 10-1.20) (M 10-.80)  
(S 10-.50) (Blbts. Pkg. .30)

**Burma Rose** ★ ★ ★ (562) (Lasch, 1953) (85 days) (Sport of Burma) A more subdued facsimile of the variety above, Burma Rose is identical in form, height, and growing habits. Glowing undertones of soft tan create an entirely new blend of coloring in Burma Rose. The throat has a somewhat deeper rose mark. Should be very popular when more widely grown.

(L 1-.50; 10-4.00) (M 1-.35; 10-2.80)  
(S 1-.25; 10-2.00) (Blbts. 10-.25; 50-100)

**Carmen Corliss** ★ ★ ★ ★ (430) (Roberts, 1953) (80 days) (Picardy x (Wings of Song x Maid of Orleans) X Incense x Beacon) This lovely soft coral pink is one of the most beautiful varieties ever introduced. It is dusted with a myriad of tiny crystals that glitter and sparkle in the sun. Carmen Corliss is a study in contrasts, too. The bright yellow throats add life and charm to the luscious salmony pink. Substance is so heavy that the ruffles appear to be carved. Not a tall grower and just a moderate propagator.

(L 1-.75) (M 1-.50; 10-4.00) (S 1-.25; 10-2.00)  
(Blbts. 4-.25; 10-.50)

**Catherine Beath** ★ ★ ★ (312) (Coutts, 1951) (85 days) (Golden Goddess x Seedling) Tops in its class for exhibition in the new NAGS Symposium! This deep, golden yellow easily opens 8-10 plain-petalled florets at once on straight, medium height spikes. Catherine Beath is a rugged grower that stands up under all kinds of weather.

(L 1-.25; 10-2.00) (M 2-.30; 10-1.20) (S 10-.80)  
(Blbts. 15-.25; 100-1.00)

**Carnival** ★ ★ ★ (437) (Butt, 1947) (85 days) (Flagship x Algonquin) Of all the varieties we picture in color, perhaps no other makes a more striking contrast than the sharp white throat against the brilliant, fiery red of Carnival as shown in our picture on page 28. Has been a best seller for several years.

(L 2-.30; 10-1.20) (M 10-.80) (S 10-.50)  
(Blbts. Pkg. .30)

**C. D. Fortnam** ★ ★ ★ (460) (Kadel, 1950) (90 days) (Red Penny x Myrna) We have always regarded this soft rose pink as one of the leading varieties in commerce. Last summer it took "time out" and retired to the bench so far as commercial cutting was concerned. We hope it will perform as a "regular" next summer.

(L 2-.30; 10-1.20) (M 10-.80)  
(S 10-.50) (Blbts. Pkg. .30)

**Circe** ★ ★ ★ (523) (K. & M., 1949) (85 days) (Axioma x Regenbogen) The bright, glossy scarlet-orange of Circe lures one from a distance like a beacon guiding a navigator on a dark night. The plainness of this brilliant glad is relieved

by a small cream mark on the throat. Circe was a welcome addition to our cut-flower garden producing fine, large spikes in a much needed color. Pictured in color in the basket on page 24, lower left-hand corner.

(L 2-.30; 10-1.20) (M 10-.80)  
(S 10-.50) (Blbts. Pkg. .30)

**Copper Lustre** ★ ★ ★ ★ (580) (Pazderski, 1953) (75 days) (Elizabeth the Queen x Burma) Copper Lustre is a huge, smoky, coppery Burma which is saying a lot. It is a dusky rose shading to copper at the edges and blending to a dark tan interior. The red throat and plum flecking adds cheer and personality to the rich blend of colors. Like Burma it has heavy substance and is heavily ruffled and fluted, opening 8-10 florets on tall spikes. Good grower and propagator.

(L 1-.50; 10-4.00) (M 1-.35; 10-2.80)  
(S 1-.25; 10-2.00) (Blbts. 10-.25; 50-1.00)

**Coral Ace** ★ ★ ★ (532) (Bunn, 1952) (85 days) (Sport of Burma)

In recent year's there have been numerous mutations in Burma plantings over the country. This glowing salmon-pink is the lightest one we have seen and certainly a different color from any of the hybrids we grow. The heavy substance and deeper coral throat add greatly to its appeal. Like Burma in size and height, we find that it opens better in water when cut with one or two open. Pictured in the color basket on page 33.

(L 1-.25; 10-2.00) (M 2-.30; 10-1.20) (S 10-.80)  
(Blbts. 15-.25; 100-1.00)

**Cream Orchids** ★ ★ ★ ★ (406) (Fischer, 1951) (70 days) (Rose O'Day x Poet's Dream) As the name implies Cream Orchids is a cream with the airy grace and capricious styling of an orchid. Each individual lacinated floret is a fantastic marvel, especially useful for corsage work. You'll find the tall, whippy spikes a joy to cut and an interesting variation in the florist's showcase.

(L 2-.30; 10-1.20) (M 10-.80) (S 10-.50)  
(Blbts. Pkg. .30)

"Of the 34 Fischer originations in my garden last year I had more enjoyment working with Cream Orchids and Wedgwood in vases, baskets and corsages, than with any other varieties."—George C. Smith, Iowa.

**Crown Jewel** ★ ★ ★ (461) (Fischer, 1951) (70 days)

(Rose O'Day x Ophir) An old Chinese proverb very sagely states, "A picture is worth a thousand words." With this thought we refer you to the very accurate picture of Crown Jewel on page 28. The color, form, and ruffling are shown in an almost life-like reproduction. Produces some shorts.

(L 2-.30; 10-1.20) (M 10-.80)  
(S 10-.50) (Blbts. Pkg. .30)

**Crusader** ★ ★ ★ ★ (301) (Fischer, 1952) (65 days) ((Rose O'Day x Legend) X (Elizabeth the Queen x Lavender & Gold))

Here is an orchid throated glad deluxe; a frosty snowy-white, beautifully ruffled and embellished with a gorgeous pansy purple throat. It opens 7-9 neatly tailored florets on fine cutting stems. A must for the arranger, a blue ribbon winner at the shows, and a "first early" for the commercial grower. Pictured in color on page 28,

(L 1-.25; 10-2.00) (M 2-.30; 10-1.20) (S 10-.80)  
(Blbts. 15-.25; 100-1.00)



*An interesting grouping of delicate-toned ORCHID FRILLS and deep pink roses. Note how well the roses tie the composition together. The fuchsia leaf adds weight and helps unite the flowers with the vase. The gladi leaves, dusty miller and clematis seed pods add grace and airiness.*

**ORCHID FRILLS OFFER: 5L, 10M, (\$5.00 value) for \_\_\_\_\_ \$2.95**

**Cupid** ★★☆☆ (300) (Fischer, 1949) (65 days) (Lavender & Gold X Picardy x Maid of Orleans) Cupid is about the first variety we think of when a customer asks for an early white. Not a large glad, it nevertheless fills a special need in any garden. The cut-flower grower will find its earliness and good height of prime importance. The nicely ruffled florets and waxy sculptured form endear this creamy throated white to the home gardener as well as the florist. Several of our grower-friends report that their florists ask for Cupid by name. Cupid is a glad for every gardener whether he has a city lot, a row in the vegetable garden or an acreage. You'll love this classy, small white.

(L 2-.30; 10-1.20) (M 10-.80)  
(S 10-.50) (Blbts. Pkg. .30)

**Dark David** ★★☆☆ (554) (Morgan, 1951) (90 days) (Mrs. Mark's Memory x Red Charm) The largest of the black reds, Dark David actually is a rich velvety maroon. The huge florets are lightly frilled and formally placed on straight stems of excellent height. A frequent winner at the shows. It has many friends, which it justly deserves, among our customers.

(L 2-.30; 10-1.20) (M 10-.80)  
(S 10-.50) (Blbts. Pkg. .30)

**Debbie** ★★☆☆ (422) (Hautby, 1955) (85 days) (Orange Gold x Lantana) Debbie may be likened to well grown Fire Opal except that it is taller and closer to a true orange. It opens 6-7 heavily ruffled, yellow-throated florets on tall, ramrod spikes. It is exceedingly robust and heat resist. A good propagator and germinator. We were impressed with Debbie even as a seedling and predict that it will soon be a leader in its class.

(L 1-1.00; 10-8.00) (M 1.75; 10-6.00)  
(S 1-.50; 10-4.00) (Blbts. 5-.50; 15-1.00)

**Dieppe** ★★☆☆ (432) (Hassal, 1945) (85 days) No gladiolus show would seem complete without the usual fine entries of Dieppe. An extremely dependable variety, it produces those tall, exhibition type spikes most consistently. The large ruffled florets are a soft salmon-scarlet that glow like burning embers. The suede-like substance and precise styling contribute the finishing touches so desirable in today's glads. One of the best bulb makers on our list.

(L 2-.30; 10-1.20) (M 10-.80)  
(S 10-.50) (Blbts. Pkg. .30)

**Dolly Varden** ★★☆☆ (532) (Harris, 1950) (85 days) (Aladdin X Morocco x Red Lory) As Dolly Varden is the largest among trout so is it giant among glads. A real eye level flower! A beautiful shade of salmon-pink with a showy white center. It is extremely broad petalled and likes to grow. Our shipping trade called for Dolly Varden last summer.

(L 2-.30; 10-1.20) (M 10-.80)  
(S 10-.50) (Blbts. Pkg. .30)

**Dusk** ★★☆☆ (483) (Fischer, 1955) (85 days) (Beauty's Blush x Rose Charm) Remember Sandman? This dusky colored glad simulates Sandman in its overall coloring. The large, bold snowball-throats immediately arrest attention and provide a striking contrast to the subdued old rose and salmon undertone. A stalwart performer, producing quantities of graceful spikes right down the row, even from small bulbs. Dusk was the very best grower

from bulblets in our entire field. In the tray, the bulbs are a joy to behold.

(L 1-.25; 10-2.00) (M 2-.30; 10-1.20)  
(S 10-.80) (Blbts. 15-.25; 100-1.00)

"I am 5 ft. 10 in. tall and your Dusk equalled my height with no extra fertilizer."

—E. L. Yeisley, Missouri.

"Dusk bloomed beautifully in three weeks of heat over 100°, with no rain. It reproduced very well, too."

—Mrs. Wilbur A. Field, Iowa.

**Dusty Miller** ★★☆☆ (486) (Elliot, 1945) (85 days) (Rose-marie Pfitzer x Vagabond Prince) Well named. A dusty old rose that has an afterglow of red on the lips with a yellow pencilling. The tall, tapering, double-row spikes are beautifully ruffled and of heavy substance. Combines beautifully with fall colors. A leading smoky.

(L 2-.30; 10-1.20) (M 10-.80)  
(S 10-.50) (Blbts. Pkg. .30)

**Edgewood** ★★☆☆ (561) (Torrie-Flad, 1951) (85 days) (Corona x Burma) To see the tall, spire-like spikes of Edgewood with its many ruffled and needle-pointed rose-shaded florets is a joy to the heart of the true glad fan. The recurved florets lay together with precision-like formality making a spike of remarkable inflorescence. Rates high for exhibition purposes and is a congnig thing as a commercial.

(L 1-.50; 10-4.00) (M 1-.35; 10-2.80)  
(S 1-.25; 10-2.00) (Blbts. 4-.25; 10-.50)

**Elizabeth the Queen** ★★☆☆

(566) (White, 1941) (85 days) ((Sheila x Gloriana) X Salbach's Orchid) For almost fifteen years Elizabeth the Queen has reigned supreme over the lavender class. Has been a top breeder and is capable of making cool-toned, ruffled lavender florets on outstanding spikes.

(L 2-.30; 10-1.20) (M 10-.80)  
(S 10-.50) (Blbts. Pkg. .30)

**Elmer's Rose** ★★☆☆ (406) (Fischer, 1951) (85 days) (Elizabeth the Queen x Rose O'Day) To enjoy Elmer's Rose fully plant it in quantity. A row of these sumptuously ruffled rose beauties will take your breath away. Add to its beauty the sum of all the good qualities desired in a glad and you have Elmer's Rose. The tall, extremely vigorous plants cut well from smaller bulbs. A good all-around variety.

(L 2-.30; 10-1.20) (M 10-.80)  
(S 10-.50) (Blbts. Pkg. .30)

"Elmer's Rose is my most beautiful glad and I grow most of them."

—Donald Wise, New York.

"I grow over 200 varieties and I rate Elmer's Rose "most beautiful."

—Joseph W. Conley, New York.

**Evangeline** ★★☆☆ (560) (Palmer, 1948) (90 days) (Greta Garbo x Elizabeth the Queen) Evangeline has been a great show winner and it has enjoyed wide popularity as a cut-flower. With us at St. Charles it likes to come short while at Leamington, Ontario (near Detroit), Evangeline attains the height and vitality of the original strain.

(L 2-.30; 10-1.20) (M 10-.80)  
(S 10-.50) (Blbts. Pkg. .30)



**Fire Opal** ★★☆☆ (442) (Fischer, 1954)

(75 days) (Gratitude X Arethusa x White Gold)) The golden throats of this lively, ruffled orange create a sparkling setting for this jewel-bright early bloomer. Fire Opal is a cheery spot of color among the more numerous pastels usually available at the beginning of the season. The medium height plants with 6 open florets grow straight and produce an exceptionally high percentage of cuttable spikes. Wants to bloom early from all sizes. Our arrangement picture on page 21 was made with blooms from smaller bulbs, yet they were adequate in height and bud count to make this tall, dramatic composition.

(L 1-.50; 10-4.00 (M 1-.35; 10-2.80)  
(S 1-.25; 10-2.00) (Blbts. 4-.25; 10-.50)

"Fire Opal impresses me as the best orange that has come to my garden. For two years it has withstood 95° heat holding 6 open and never a wilt. Truly a fine glad."  
—Howard D. Andrews, Ohio

"Of the many new introductions that I grow Fire Opal is the most eye catching."  
—E. A. Barlow, New York.

**Flora** ★☆☆ (460) (Fischer, 1952) (85 days)

(Rose O'Day x Elizabeth the Queen) Flora has superb substance and a refreshing, frosty sheen that gives it lush yet characterful beauty. A worthy namesake of the Roman goddess of flowers. See it in color on page 28. (There may be some shorts.)

(L 1-.25; 10-2.00) (M 2-.30; 10-1.20)  
(S 10-.80) (Blbts. 15-.25; 10-1.00)

**Florence Nightingale** ★☆☆

(400) (Harris, 1947) (80 days) (Mrs. T. E. Langford x Pfitzer's Triumph) Florence Nightingale is considered the leading white tho' Mother Fischer and Sierra Snow give it some mighty stiff competition. It opens 6-8 lacy 5-inch florets on flag pole spikes. Florence Night-

*A triangular arrangement of FIRE OPAL with mountain ash and glad foliage.*

ingale gave an admirable account of itself here last summer.

(L 2-.30; 10-1.20) (M 10-.80)  
(S 10-.50) (Blbts. Pkg. .30)

**Florentine** ★☆☆ (500) (Fischer, 1950)

(80 days) (Snow Princess X Minuet x Picardy)) A large ruffled statuesque creamy-white of heavy substance that grows nearly 5 feet tall. Plants are exceedingly rugged. We cut a lot of Florentine during last summer's trying weather.

(L 2-.30; 10-1.20) (M 10-.80)  
(S 10-.50) (Blbts. Pkg. .30)

**Forsythia** ★☆☆ (512) (Harris, 1952) (70

days) (Corona x Orange Gold) Forsythia is one of the best yellows available. The buds and opening florets have a distinct char- treuse cast but they lighten to clear medium yellow. Forsythia is a tall, rugged grower and a dependable cutter. A worthwhile variety.

(L 1-.25; 10-2.00) (M 2-.30; 10-1.20)  
(S 10-.80) (Blbts. 15-.25; 100-1.00)

**Francesca** ★☆☆ (560) (Toben, 1950)

(90 days) (Shirley Temple x Elizabeth the Queen) In our estimation Francesca is the most beautiful among lavenders. It is on the line between lavender and rose-pink but a marvel of beauty whatever the color. Seven to nine neatly ruffled florets are meticulously placed on tapering heads. A good producer of rather small bulblets that grow well. Beautiful Francesca is generously endowed and is here to stay awhile.

(L 1-.35; 10-3.00) (M 1-.25; 10-2.00)  
(S 2-.30; 10-1.20) (Blbts. 10-.25; 50-.75)



*Above—A triangular grouping of WILD ROSE in a chartreuse bamboo vase. The sword-like glad foliage suggests a dashing upward sweep. Hosta and rhubarb leaves are suggestive of a green bow, tying the whole together. The spread picks up the color of the flowers.*

*Right—Lavishly frilled WHITE LACE glads, ruby-red Dolgo crabs, and double shasta daisies create a stimulating line pattern in a pleasing radiating movement.*



## SPECIAL PREPAID OFFERS ON:

### *Wild Rose*

Wild Rose Offer "A":  
3L, 3M, 5S (a \$4.00 value)

**for \$2.85**

Wild Rose Offer "B":  
5L, 5M, 10S, (a \$6.00 value)

**for \$4.50**

### *White Lace*

White Lace Offer "A":  
10L, 20M, (a \$2.80 value)

**for \$1.85**

White Lace Offer "B":  
10L, 25M, 25S, (a \$4.45 value)

**for \$3.00**



**Friendship** ★★☆☆ (440) (Fischer, 1949) (65 days) ((Picardy x Maid of Orleans) X (Gloaming x Seedling)) The name, Friendship, implies one of life's most precious gifts—something priceless, yet freely given after it has been won. Among our numerous introductions we look upon Friendship as being a most generous gift from a Master Designer. Down through the years, Friendship, like a true friend, has been consistently dependable. Combining earliness, (it is often the first to bloom) with quality, Friendship comes at a time when the florists are hungry for glads. But, whether planted for early bloom or later cutting you can be sure of tall, gloriously fresh-toned, pure pink spikes of ethereal beauty.

(L 2-.30; 10-1.20) (M 10-.80)  
(S 10-.50) (Blbts. Pkg. .30)

"Each year I plant Friendship at intervals through the season. Have had bloom from June 17 to September 30 and never a burned floret, no matter what the temperature. How a glad so daintily beautiful can be so sturdy is a mystery to all who see it."

—Mary Eakin, Kansas.

"Friendship bloomed June 6, the first flower to bloom in 8 out of 9 years. Six acres will soon be in full bloom. Thank you for wonderful glad!!"

—Wendell Heaton, Nebraska.

**Gene** ★☆☆ (410) (Farrington, 1949) (70 days) Alchemy) This intensely-frilled, flat-open, triangular-floreted, translucent light yellow will open 7-8 well-attached florets at a time on nice flowerheads. There is a crystalline fragility to its beauty which belies its stamina. Gene has already won the plaudits of many fanciers and growers and, I feel sure, it will win yours.

(L 2-.30; 10-1.20) (M 10-.80)  
(S 10-.50) (Blbts. Pkg. .30)

**Ginger** ★☆☆ (422) (Fischer, 1952) (85 days) (Bonnie Brian x Ophir) Well named is this spicy, sparkling richly-toned blend of orange and salmon. It is studded with a ruby deep in the throat which is surrounded with a large golden aura. Ginger has heavy substance, lavish ruffling and a high order of beauty. Slow propagator.

(L 2-.30; 10-1.20) (M 10-.80)  
(S 10-.50) (Blbts. Pkg. .30)

**Gold** ★★☆☆ (412) (Marshall, 1951) (75 days) (Seedling of Orange Gold) Gold has been propagandized as the successor to Spotlight and in many respects this is true. For purity of color, heavy substance, health, and dependability, Gold is tops. It is an easy grower producing uniform spikes right down the row. Doesn't have as many buds as some may want (14-16) but they open well and keep their color and size to the tip. (See color plate pages 20-21) For maximum spikes one must plant the larger size bulbs though it blooms very well from all sizes and bulblets. Robust in the field and a good keeper in the bulb trays. Moderate propagator—good germinator.

(L 2-.30; 10-1.20) (M 10-.80)  
(S 10-.50) (Blbts. Pkg. .30)

**Golden Boy** ★☆☆ (310) (Secret, 1954) (85 days) (Golden Goddess x Lantana) Golden Boy is a medium canary yellow with a bright metallic sheen. It had quite an enviable record at the shows while still a seedling as it will open 8-10 round, 4-inch florets on 20-22 bud spikes. Has yet to establish its worth as a cut-flower with us but it's worthy of a trial.

(L 1-1.00) (M 1-.75) (S 1-.50)  
(Blbts. 5-.25)



Sweet Sixteen

Florentine

**Gorgeous Deb** ★★☆☆ (530) (Wilson, 1949) (85 days) (Victory Queen x Francis M. Irwin) Gorgeous Deb represents the ultimate in beauty in gladiolus. The intense ruffling, the heavy substance, the chiselled styling, and the purity of color sing to the heart of any glad lover. It is a true, rich salmon with a glowing golden heart. Unfortunately the florets are a little too loose to stand much handling and the plant needs extra culture to give its best.

(L 2-.30; 10-1.20) (M 10-.80)  
(S 10-.50) (Blbts. Pkg. .30)

**Harrisburger** ★☆☆ (452) (Mikle, 1953) (95 days) (Picardy Seedling x Burma) What a pleasure to encounter a new variety so good one can give it an unqualified endorsement! That's what we can do for this matchless new red. Harrisburger has flagpole stems, 20-22 buds, and 8 flat-open blooms of the heaviest substance and finest ruffling. What an All-America winner this would have made! Be sure to plant it early so it blooms before danger from frost.

(L 1-.50; 10-4.00) (M 1-.35; 10-2.80)  
(S 1-.25; 10-2.00) (Blbts. 8-.25; 25-.50)

## Harry Hopkins $\frac{\star \star \star}{\bullet \bullet \bullet}$ (462) (Salman, 1947) (85 days)

The silky, rose-red, plain-petalled florets of Harry Hopkins are slightly recurved and produce quite a tailored effect. We have used this Holland origination to advantage as an early cut-flower though it is not a "first early." Florists like the color. Makes good bulbs that keep well.

(L 2-.30; 10-1.20) (M 10-.80)  
(S 10-.50) (Blbts. Pkg. .30)

## Heart O' Gold $\frac{\star \star \star \star}{\bullet}$ (401) (Fischer, 1950)

(65 days) ((Maid of Orleans x Picardy) X Lavender & Gold) Think of the pure white of an Easter lily and the soft yellow of a Darwin tulip. Then imagine these two colors blended in a glad! Heart O'Gold is just such a blend—florets of sparkling, frosty white surround the large yellow throat in this rare gem. Heart O'Gold will strike you like a breath of spring when you see the tall, graceful spikes. One of our earliest bloomers—we wish the bulbs made more husk to protect them from bruising.

(L 2-.30; 10-1.20) (M 10-.80)  
(S 10-.50) (Blbts. 50-.30)

"Juno is especially beautiful and so is Pink Diamond."  
—Mrs. B. T. Tatem, Virginia.

Pink Diamond

Snowdrift



## Helios $\frac{\star \star \star \star}{\bullet \bullet \bullet \bullet}$ (412) (Fischer, 1952) (85 days)

Helios has earned its way as our top yellow the past two years. Each season we cut more glorious spikes of Helios than any other yellow. It cuts so well from small bulbs! Helios opens 6-7 gracefully ruffled, clear, deep yellow florets on willowy stems that never crook. Prolific and rugged. A great glad!

(L 2-.30; 10-1.20) (M 10-.80)  
(S 10-.50) (Blbts. Pkg. .30)

## Howard V. Wright $\frac{\star \star \star}{\bullet \bullet \bullet}$

(410) (Kadel, 1952) (80 days) (Spotlight x Myrna) Howard V. Wright, a large, plain-petalled, light yellow, is a worthy addition to its class and rates well in the symposiums. Florets are very large, round, and well arranged on strong exhibition spikes. Can be a contender for Grand Champion. A fitting memorial for the grand character who has done so much for glads.

(L 1-.50; 10-4.00) (M 1-.35; 10-2.80)  
(S 1-.25; 10-2.00) (Blbts. 8-.25; 25-.50)

## Juno $\frac{\star \star \star}{\bullet \bullet \bullet}$ (460) (Fischer, 1955) (85 days)

good color rendition of rose. For a arrangement on page 8.

Juno gives one an over-all impression of rose. The rose is like a sheer chiffon veil through which an undertone of salmon appears. The florets are frilled and slightly recurved with 7-8 open on 18-20 bud spikes. We feel sure that Juno will find a place in your garden and earn its way as a cutter, too. Dr. R. H. Jeur's spike of Juno was Reserve Champion at Wausau, Wis. last summer.

(L 1-.50; 10-4.00) (M 1-.35; 10-2.80)  
(S 1-.25; 10-2.00) (Blbts. 10-.25; 50-1.00)

"We had some fine glads from you but Juno is IT, a real beauty."  
—Charles D. Balentine, Vermont.

## Karen $\frac{\star \star \star}{\bullet \bullet}$ (465) (Mazur, 1952) (80 days)

The color of Karen is quite accurately reproduced in the picture on page 33. Makes tall, smooth silky ribbons of bloom.

(L 1-.50; 10-4.00) (M 1-.35; 10-2.80)  
(S 1-.25; 10-2.00) (Blbts. 8-.25)

## King David $\frac{\star \star \star \star}{\bullet \bullet \bullet \bullet}$ (570) (Carlson, 1951) (85 days)

(King Lear Seedling) Tall, tapering spikes of this rich, velvety purple with their faint silver picotee are a breath-taking sight. The well-attached florets open wide and seem to be flared rather than ruffled. King David has been a show winner since its seedling days when the advent of a new and better purple was first proclaimed. Though several stiff competitors have joined the purples, we find each useful and lovely in its own right.

(L 2-.30; 10-1.20) (M 10-.80)  
(S 10-.50) (Blbts. Pkg. .30)

## Knighthood $\frac{\star \star \star}{\bullet \bullet}$ (470) (Fischer, 1952)

(85 days) (Parentage unknown) Not as velvety, deep purple as King David, nor as tall and willowy as The Rajah, nevertheless, Knighthood is a distinct and beautiful purple glad. The round, ruffled florets are punctuated with white stamens creating tiny accent points in each. We have a special liking for Knighthood and think you'll agree that it is a deserving variety.

(L 2-.30; 10-1.20) (M 10-.80)  
(S 10-.50) (Blbts. Pkg. .30)

## Fire Opal Offers

### Prepaid

Fancier's Collection:  
2L, 2M, 5S, (a \$2.70 value) for.....\$2.00

Exhibition Collection:  
5L, 5M, 10S, (a \$4.50 value) for.....\$3.25

## Gold Specials

### Prepaid

Arrangement Collection:  
15L, 15M, (a \$3.00 value) for.....\$2.25

Home Gardener's Collection:  
10L, 20M, 30S, 100 Blbts., (a \$4.80 value)  
for.....\$3.50

*Waxy, deep yellow GOLD is dramatic when grouped with the rich-toned hemerocallis used as a center of interest.*



*LITTLE GOLD is an extremely valuable small glad for the arranger. In a low flat bowl we have grouped it in a triangular placement in combination with anthemis Kelwayi for a very pleasing effect. Small rhubarb leaves and a few flat weathered rocks add interest to the composition.*



*Reminiscent of a ballet dancer is this dashing arrangement of sumptuous FIRE OPAL combined with mountain ash foliage, tiger lilies, and tuberous begonias in a tall copper container.*



**Lady Anne**  $\frac{\star\star\star}{\bullet\bullet\bullet}$  (400) (Buchanan, (Maid of Orleans x Dina Shore) 1947) (70 days) Next to Cupid for earliness, Lady Anne vies with Florence Nightingale in size and height, in fact, we have had to look to our staves to positively identify them at times. Slightly ruffled, creamy-throated Lady Anne will please you with its size and good habits. For an exceptionally well-grown specimen, see picture on page 24, to the left.

(L 2-.30; 10-1.20) (M 10-.80)  
(S 10-.50) (Blbts. Pkg. .30)

**Lavender Lace**  $\frac{\star\star\star}{\bullet\bullet\bullet}$  (466) (Fischer, (Poet's Dream x Elizabeth the Queen) 1950) (80 days) Lavender Lace is our leading commercial lavender. Its waxy texture, dash of ruffling, and its rich jersey-cream throat make a composition that is truly lush and ethereal. It makes nice bulbs that grow well. Pictured on page 28.

(L 2-.30; 10-1.20) (M 10-.80)  
(S 10-.50) (Blbts. Pkg. .30)

**Leah Gorham**  $\frac{\star\star\star}{\bullet\bullet\bullet}$  (450) (Gorham, (American Commander x Liberator) 1951) (85 days) One of the more striking varieties on our list, Leah Gorham makes tall, graceful spikes of smooth, recurved scarlet florets vividly contrasted with their clean, white throats.

(L 2-.30; 10-1.20) (M 10-.80)  
(S 10-.50) (Blbts. Pkg. .30)

**Leif Erickson**  $\frac{\star\star\star}{\bullet\bullet\bullet}$  (506) (K & M, (The leading cream for both exhibition and commercial use according to the NAGC symposium judges. Leif Erickson is a tall, sturdy grower producing long flower-heads with 7-9 nicely ruffled, heavy-substanced florets open at one time.

(L 2-.30; 10-1.20) (M 10-.80)  
(S 10-.50) (Blbts. Pkg. .30)

**Look**  $\frac{\star\star\star}{\bullet\bullet\bullet}$  (540) (Taylor, 1953) (90 days) Look at that stalwart poise and serene uniformity of coloring of that majestic glad! It is the tallest glad on our list. Its name is Look! Look commands attention everywhere and especially in the garden. Opens 6-7 delicate pink florets or skyscraper heads. Rugged! Moderate propagator.

(L 1-.50; 10-4.00) (M 1-.35; 10-2.80)  
(S 1-.25; 10-2.00) (Blbts. 4-.25; 10-.50)

**Lorelei**  $\frac{\star\star\star\star}{\bullet\bullet\bullet\bullet}$  (406) (Howell, 1955) (80 days) (Corona x Elizabeth the Queen) X (Florence Nightingale x Seedling) According to German legend Lorelei was a maiden who haunted a rock on the Rhine, and by her beauty and charm lured sailors to destruction. This modern glad will lure you, too, with her beauty of form and charming personality. 7 or 8 heavy-substanced, ruffled, carved florets are open on tall, graceful spikes. The color is a glistening pure cream. Lorelei already has many friends. We like her growing habits. She was "most beautiful spike" at the Eastern International Show last summer and "3 spike grand" at the Maryland Show.

(L 1-2.00) (M 1-1.50) (S 1-1.00)  
(Blbts. 2-.50; 10-2.00)

**Magnet**  $\frac{\star\star\star}{\bullet\bullet\bullet}$  (530) (Fischer, 1952) (75 days) (Rose O'Day x Elizabeth the Queen) Magnet is a compelling flower. It is a magnetic shade of rich orchid or rose-lavender found in the deep-toned cattleya hybrids. This sister of Noweta Rose grows fully five feet high and produces a wide ribbon of bloom. Florets spiral a bit

and have a tendency to face upward. Strangely, this is an asset in arrangement work where you like to see the flowers from all sides. Budded spikes of Magnet and Noweta Rose take a day longer to open than most varieties do.

(L 2-.30; 10-1.20) (M 10-.80)  
(S 10-.50) (Blbts. Pkg. .30)

**Margery**  $\frac{\star\star\star}{\bullet\bullet\bullet}$  (462) (Melk, 1953) (75 days) (Candy Splash x Burma) An extra fine, tall, medium rose with a slight feather. Margery is similar to Elmer's Rose in color. Introduced without much fanfare but is steadily gaining in popularity. We believe this winsome gal will be with us for some time.

(L 1-.50; 10-4.00) (M 1-.35; 10-2.80)  
(S 1-.25; 10-2.00) (Blbts. 4-.25; 10-.50)

**Mesa Mist**  $\frac{\star\star\star}{\bullet\bullet\bullet}$  (486) (Hartman, 1952) (85 days) (Sport of Pastel) The smooth pearly gray of Mesa Mist is most unusual, being the only glad of this shade on our list. Mesa Mist can be used most effectively in creating shadow effects combined with yellows, rose-red, purples, or violets using it toward the rear or in the heart of your arrangement. Try it sometime! You'll have something entirely different! Grows like a weed but you must cut the spikes as they begin to bloom or they will topple over.

(L 2-.30; 10-1.20) (M 10-.80)  
(S 10-.50) (Blbts. Pkg. .30)

**Minaret**  $\frac{\star\star\star}{\bullet\bullet\bullet}$  (432) (Fischer, 1955) (85 days) (Beauty's Blush x Friendship) Minaret is a lofty spire-like salmon-pink glad that consistently produces model spikes even from small bulbs. It is not as rich in adjectives as some but it has a dependability that is rarely equalled. 7-9 round, recurved, casually ruffled, ivory-throated florets are precisely placed on steeple-like heads that have a generous bud count. Bulblets are exceptional growers often making marketable spikes even here in Minnesota. From Beauty's Blush, Minaret has inherited a remarkable quality of disease resistance. A coming commercial.

(L 1-.60; 10-4.80) (M 1-.40; 10-3.20)  
(S 1-.25; 10-2.00) (Blbts. 10-.50; 100-3.00)

**Mixture** For those who don't have the hobbyist's instinct to have their glads labelled or who like an unlabelled collection just to see what surprises it may have in store for them, we make up this mixture from the regular varieties in our list, often including some high priced variety that we may be long on and sometimes putting in a few interesting, seedlings that were too good to discard. I don't believe a better mixture is available anywhere.

(L 10-.80) (M 10-.50) (S 10-.30)

**Mother Fischer**  $\frac{\star\star\star\star}{\bullet\bullet\bullet\bullet}$  (400) (Fischer, 1951) (85 days) (Pink Paragon x Elizabeth the Queen) In all the floral kingdom whites never seem to be overabundant. They have a universal appeal that makes them acceptable at any time and for every occasion. Perhaps, too, it is because we all instinctively admire this symbol of purity and innocence. But, whatever the reason, we always feel that we never have too many white glads and when we find one that seems faultless, we indeed have cause to rejoice. Mother Fischer is such a glad—a tall, ruffled, handsome white that makes the grandest cutting spikes (see halftone, page 23) even from small bulbs. An exceptionally good grower and bulb maker; about the most beautiful bulb in our storage. Very prolific, too. Mother Fischer was Grand Champion three times last summer.

(L 2-.30; 10-1.20) (M 10-.80)  
(S 10-.50) (Blbts. Pkg. .30)

**Necia**  $\frac{\star\star\star}{\bullet\bullet\bullet}$  (442) (Both, 1499) (85 days) One of the most unusual color combinations is Necia, a glad from far off Australia. The faintly ruffled florets are a lively deep pink with a pool of deep mulberry-rose on the lips. The tall straight spikes are a joy to cut.

(L 1-.25; 10-2.00) (M 2-.30; 10-1.20)  
(S 10-.80) (Blbts. 15-.25; 100-1.00)

**Nordic Queen**  $\frac{\star\star\star\star}{\bullet}$  (540) (Fischer, 1952) (85 days) (Greta Garbo x Elizabeth the Queen) Nordic Queen is a delectable flesh-pink that blends to a smooth, creamy throat. Try combining Nordic Queen with Stormy Weather for something different. Use Stormy Weather as a shadow-color. Illustrated in color on page 28.

(L 1-.35; 10-2.80) (M 1-.25; 10-2.00)  
(S 2-.30; 10-1.20) (Blbts. 10-.25)

**Noweta Rose**  $\frac{\star\star\star}{\bullet\bullet}$  (560) (Fischer, 1950) (85 days) (Rose O'Day x Elizabeth the Queen) Few glads have enjoyed the popularity that Noweta Rose has. Few glads combine incredible size, good color, heavy substance, tremendous inflorescence and the beauty that Noweta Rose does. It is no coincidence that at glad shows throughout the country blooms of this lavender-rose have taken home the blue ribbons. We know of 4 Grand Champions that it won last summer. To do its best Noweta Rose needs more fertility than most glads. Give it an extra shot of nitrogen and you can grow spikes that will be the envy of your neighborhood.

(L 2-.30; 10-1.20) (M 10-.80)  
(S 10-.50) (Blbts. Pkg. .30)

"My grand champion Noweta Rose stood up to my shoulder when cut, carried ten open during the show and had twenty-two buds in all."

—Stan Gugin, Manitoba.

"Pink Chiffon and Purple Burma that you sent me were very good but Noweta Rose was the best variety that I had in my garden this past summer. July and August were the driest and hottest for a good many years. Noweta Rose stood without burning or wilting. Thanks for the finest bulbs I ever planted."

—Eugene R. Butcher, Illinois.

### **October Sunshine** $\frac{\star\star\star}{\bullet\bullet\bullet}$

(420) (Quackenbush, 1947) (85 days) (Picardy x Yellow Perfection) Thoughts of Indian Summer with its predominance of golden hues bring October Sunshine to mind. It is perfectly named as the color, a blend of yellow and orange, is reminiscent of the coloring of some of the maple trees in our town during October. But, with this glad you can bring this wondrous color indoors to enjoy its warmth and cheer. The spikes carry 6-8 plain-petalled blooms of good substance.

(L 2-.25; 10-1.00) (M 10-.70)  
(S 10-.40) (Blbts. Pkg. .25)

**Orchid Frills**  $\frac{\star\star\star\star}{\bullet\bullet\bullet}$  (466) (Fischer, 1955) (80 days) (Elizabeth the Queen x Beauty's Blush) The illustration on page 13 admirably describes the ravishing beauty of this exquisite glad. What a classical setting of glads and roses! A light touch is added with the silvery artemesia and the fluffy seed of clematis. The glad spikes and leaves suggest aspiration while the hosta leaves tie the ensemble together with a clever little bow.

Orchid Frills is a queenly flower. The delectable

light orchid tone blends with ineffable smoothness to a soft creamy throat. But, in the nobility of its form and perfection of its ruffling lie much of its beauty. Orchid Frills has good field performance.

(L 1-.50; 10-4.00) (M 1-.35; 10-3.00)  
(S 1-.25; 10-2.00) (Blbts. 15-.25; 100-1.50)

**Pactolus**  $\frac{\star\star\star}{\bullet\bullet\bullet}$  (418) (K. & M., 1947) (80 days) (Maskerade x Pfitzer's Wunderkind) The most spectacular blotched variety ever introduced. Its prominent scarlet blotch on a warm buff ground reminds one of the departing sun swimming in the liquid amber of the evening sky. Or one might call it the pansy glad, since the blotches cover almost as much of the petals as the blotches of pansies. A good grower that readily opens eight beautifully ruffled, flat-open, round blooms. Deserving of the popularity it enjoys. See our striking picture on page 28.

(L 2-.30; 10-1.20) (M 10-.80)  
(S 10-.50) (Blbts. Pkg. .30)

Mother Fischer





## *Fan-Maker Collection*

**Offer 1:** 1L and 1M of each variety, labelled, listed below,  
38 bulbs in all, (a \$7.78 value) for \_\_\_\_\_ \$5.00, Prepaid

**Offer 2:** 2L and 2M of each variety, labelled, listed below,  
76 bulbs in all, (a \$15.56 value) for \_\_\_\_\_ \$9.00, Prepaid

Aureole\*  
Carnival\*  
C. D. Fortnam\*  
Circe\*  
Dieppe\*  
Dolly Varden\*

Dusk  
Florence Nightingale\*  
Juno  
Lady Anne\*  
Magnet  
Necia\*

Orchid Frills  
Poinsettia  
Purple Burma  
Summer Queen  
Sweet Sixteen  
Tivoli\* Wild Rose

\*Illustrated in above basket.



# Rainbow Collections

The very best buy in our catalogue. If you have never grown glads before and are looking for a real bargain, try this collection! It is a hand-picked unlabelled assortment of bulbs in a complete range of colors as illustrated. An excellent gift for a friend or relative.

**Rainbow Collection "A": 25 Top Size, 1 1/4" diameter & up, \$1.75, Prepaid**

**Rainbow Collection "B" 50 Top Size, 1 1/4" diameter & up, \$3.25, Prepaid**

**Rainbow Collection "C": 100 Top Size, 1 1/4" diameter & up, \$6.00, Prepaid**

**Rainbow Collection "D": 100 Medium Size,  
3/4" to 1 1/4" diameter ----- \$3.00, Prepaid**



**Palette** ★★ ★ (437) (Kooy, 1951) (85 days) Tops in novelty value, and surprisingly, too, tops for florist use, Palette must be seen to be appreciated. One would not expect any thing but discord in a combination of scarlet and blue-violet but nature has achieved a wonderful harmony in the bright scarlet florets with their unusual blue throats. Opens 5-6 on average height plants Try it for something different in arrangements.

(L 2-.30; 10-1.20) (M 10-.80)  
(S 10-.50) (Blbts. Pkg. .30)

**Pasteline** ★★ ★ (440) (Kolb, 1948) (85 days) (Maid of of Orleans x Picardy) If you like them large, grow Pasteline. The 6-7 large, round, fresh dawn-pink florets are gracefully borne on sturdy stems. If you are looking for a new pink for cutting, we heartily recommend Pasteline. What a joy to cut it from small bulbs! What a rugged grower!

(L 2-.30; 10-1.20) (M 10-.80)  
(S 10-.50) (Blbts. Pkg. .30)

**Paul Bunyan**



**Patrol** ★★ ★ ★ (416) (Palmer, 1946) (75 days) (Picardy x Golden Goddess) Here is a glad which is often prominent in the Court of Honor when the grandchampion is being chosen. Indeed, it often captures the top honor itself. Patrol is a luscious golden-buff, opening 8-9 glossy, opulent blooms on a shapely formal spike with abundant stretch.

(L 2-.30; 10-1.20) (M 10-.80)  
(S 10-.50) (Blbts. Pkg. .30)

**Paul Bunyan** ★★ ★ (540) (Melk, 1955) (Seedling x Seedling) Pictures are more effective than words, so, on this page we see Kenneth Melk, 5 years old (at the time of the picture), son of Mrs. and Mrs. George Melk, Milwaukee, Wisconsin, and Paul Bunyan. The color is salmon-pink with a deep rose throat. It is a shade lighter than Spic and Span.

(L 1-1.00; 10-8 00) (M 1-.75; 10-6.00)  
(S 1-.50; 10-4.00) (Blbts. 10-1.00)

**Pink Chiffon** ★★ ★ ★ (460) (Fischer, 1953) (75 days) (Seedling of Lavender & Gold x Dawn Glow)

The color of Pink Chiffon is such a delicate shade of pale rose-pink that one may not at first appreciate its worth. The intense sunlight of mid-summer seemingly kills all but strong colors. Shade Pink Chiffon, or better still, bring it in the house where it rightfully belongs. Then view it in the restfulness of your home where soft lamplight shining upon it will thrill you with its exquisite, melting beauty. Arrange it alone with just a touch of foliage, or let yourself go, and make a real "super-duper" with the addition of pale pink roses, snapdragons, or whatever flowers and filler suggest themselves to you. You'll have fun and satisfaction, too.

Pink Chiffon is an ideal florist's glad. Works up well for every purpose being especially adaptable with wedding accessories. One of the loveliest bridal pieces we ever saw was made with Pink Chiffon.

(L 1-.25; 10-2.00) (M 2-.30; 10-1.20)  
(S 10-.80) (Blbts. 15-.25; 100-1.00)

"The Pink Chiffon I bought from you was just lovely.. Everyone who saw it raved over it."

—Mrs. Al Michaelson. Minnesota.

"Pink Chiffon and Ruffled Ebony are perfectly beautiful. I like them together. I also think Ruffled Ebony is super with white."—Mrs. H. H. Shinville, Michigan.

"The Pink Chiffon is exquisite and truly out of this world! At one of the exclusive flower shops, everyone agreed the 'Pink Chiffon' is a champion of beauties."

—Mrs. H. Pereizzini, New York.

**Pink Diamond** ★★ ★ ★ (440) (Fischer, 1954) (70 days) (White Christmas x Friendship) Pink Diamond is a fitting name for a gladiolus that has the exquisite pink hue and the same authentic sparkle and glitter of these lovely gems. It has a frostiness of sheen, an overlay of diamond dust such as is found only in God's own handiwork. It grows 55-60 inches tall, with nearly every flower in bloom at once. The slender 30-inch head holds 6-7 heavily ruffled, heavy-textured round florets open at once in a formal but graceful array. Few varieties have given us the fine testimonials that Pink Diamond has.

(L 1-.50; 10-4.00) (M 1-.35; 10-2.80)  
(S 1-.25; 10-2.00) (Blbts. 4-.25; 10-50)

"The first time I saw Pink Diamond I said it was the most beautiful glad I had ever seen, but when it bloomed again this year I found it even more lovely. From one bulb I had two spikes that were five feet tall, 22 buds each and 8 open in perfect placement. These bloomed when the temperature was well above 90° and no burning."

—Lee J. Ashley, Colorado.

**Pink Dots** ★★ (301) (75 days) (Originator and parentage unknown) Seen in a composition, Pink Dots is very intriguing; it is strikingly different in its polka dot effect of pink on white. Our florists call for it and we even shipped some last summer. Grows like a weed. Tall and straight.

(L 1-.25; 10-2.00) (M 2-.30; 10-1.20)  
(S 10-.80) (Blbts. 15-.25; 100-1.00)

**Poinsettia** ★★ (450) (Johnson, 1952) (85 days) (Parentage unknown) The sensational red of 1952 and it is still holding its own along with the leading reds. Poinsettia is a clear, flaming scarlet-red that opens about 7 round, moulded florets on ramrod stems. We got a lot of good cutting from this variety last summer.

(L 2-.30; 10-1.20) (M 10-.80)  
(S 10-.50) (Blbts. Pkg. .30)

**Princess** ★★ (466) (Larus, 1953) (90 days) Elizabeth the Queen x Miss Wisconsin) Princess may be described briefly by saying that it is a darker Elizabeth the Queen. It seems to have inherited a large part of its color factor from Miss Wisconsin, a one-time leader in its class. In but two years time this bright rosy lavender has skyrocketed to the leading exhibition lavender, being a consistent winner at the shows. It has a bright commercial future, too.

(L 1-.50; 10-4.00) (M 1-35; 10-2.80)  
(S 1-.25; 10-2.00) (Blbts. 4-.25; 10-50)

**Prof. Goudrian** ★★ (500) (K & M, 1950) (75 days) An improved version of the older Snow Princess. This is saying a lot, as good old Snow Princess was one of the leading glads of all time. Physical characteristics and performance are all of the best. It will open up to 8 well placed florets on tall, well proportioned spikes. Prof. Goudrian is to be reckoned with on the show table; a top commercial.

(L 2-.30; 10-1.20) (M 10-.80)  
(S 10-.50) (Blbts. Pkg. .30)

**Prospector** ★★ (412) (Leffingwell, 1953) (85 days) (Derived from Golden Goddess, Royal Gold, and various seedlings) If we had been hunting for gold we couldn't have been more excited than when we found Prospector the first time. We promptly laid claim to a block of stock of this yellow and golden-lipped discovery. Florets ruffled and round as a dollar fit neatly on the stately spikes. Makes exemplary plants and produces quantities of bulbets which for us have grown well.

(L 1-.50; 10-4.00) (M 1-.35; 10-2.80)  
(S 1-.25; 10-2.00) (Blbts. 4-.25; 10-50)

**Purple Burma** ★★ (570) (Boewe, 1955) (85 days) (Sport of Burma) Our leading 1955 introduction! A mutation of Burma and like its parent it enjoys the same fine qualities: the sumptuous ruffling, the fluting, the heavy-suede-like substance, the rich velvety texture, the fine, long heads, the generous bud count, and the same vigorous growth in the field. Burma is still unchallenged in a glorious rose-red but now it is duplicated in a still more glorious rich, deep-purple. Purple Burma is a kingly flower, wearing a rich velvet robe of regal splendor.

Though we do not recommend Purple Burma as a good long distance shipper, successive tests have shown that it will open well in water; far superior to Burma or its other sports.

On page 37 we are proud to present Purple Burma in a striking departure from the usual. Mr. Starker has given us not only a new style in the arrangement of the glad, has also presented it to us in an original and gracious setting. The color harmony of yellow and purple is most striking while the heavy ruffling of the glads is repeated in the subdued fluting of the pottery. The mellowness of the pewter-washed copper container is further enhanced by the soft glow of the lighted candles. Never before have we seen gladiolus so tastefully displayed—nor has a purple ever received such an honor. We feel sure that you will concur on our picture of Purple Burma as well as the glad itself when you grow it, as you must, in your own garden.

(L 1-.35; 10-3.00) (M 1-.25; 10-2.00)  
(S 2-.30; 10-1.20) (Blbts. 25-.25; 100-.75)

"Last spring I ordered one dozen bulbs of your purple Burma. Last week I drove 250 miles to the National Glad Show at Washington, D. C. I won the three spike Grandchampionship with Purple Burma over stiff competition. The single spike was runner-up for Grand Champion."—H. L. Sandy, West Virginia.

"Your beautiful Purple Burma won a Grand Champion trophy for me at the first annual gladiolus show of the Inland Empire Gladiolus Show in Spokane on August 13 and 14. Purple Burma was really gorgeous." —Mrs. F. Ellis Moyer, Washington.

"We had a very gratifying gladiolus year. Ruffled Purple Burma was simply splendid."

—Wilbur N. Abbott, Ohio.

**Recompense** ★★ (410) (R. Pruitt, 1953) (80 days)

A "glorified" Spotlight, much refined in form, might well describe Recompense. Slightly paler yellow, the florets are beautifully ruffled and recurved and formally placed on the tall, slender spikes. Recompense easily opens 10 on a 20-22 bud flowerhead. It already has been the recipient of three major awards at the 1952 Central International Gladiolus Show in Sioux City. Stock has been limited since its introduction though we expect the supply to be adequate now. Grows well even if, like Patrol, the foliage appears to ripen early. Nonetheless Recompense makes fine bulbs and has a brilliant future.

(L 1-.50; 10-4.00) (M 1-.35; 10-2.80)  
(S 1-.25; 10-2.00) (Blbts. 4-.25; 10-50)

**Red Charm** ★★ (452) (Butt, 1939) (80 days) (Com. Koehl x Picardy)

The oldest variety on our list and still a standard commercial red—not a scarlet. Note how many of the newer reds come from Red Charm. While it does not have the height and glamour of some of its progeny, Red Charm makes spikes of commendable size opening 6-8 silky-smooth red florets.

(L 2-.30; 10-1.20) (M 10-.80)  
(S 10-.50) (Blbts. Pkg. .30)

**Red Radiance** ★★ (450) (Melk, 1953) (85 days)

(Red Charm x Spotlight) This flashy, scintillating flower will illuminate your cutting garden and provide you with many thrills thru the season. We recommend your buying several sizes so that you will have a succession of bloom. Just the shade of red the florists ask for, Red Radiance opens 7 to 9, 5-inch florets on tall spikes. Extremely prolific. We are enthusiastic about this coming commercial.

(L 1-.40; 10-3.20) (M 1-.30; 10-2.50)  
(S 1-.20; 10-1.50) (Blbts. 10-.40; 100-3.00)

"Pink Diamond is our choice of all the new glads. It is always perfect." —Mrs. Geo. Buckmaster, Montana.



**Red Velvet** ★★ ★ (452) (Bastian 1952)  
 (85 days) (Tip Top x  
 Com. Koehl) Well grown Red Velvet makes a tall,  
 very trim, neatly-tailored flowerhead. Makes exceed-  
 ingly high crowned bulbs from bulblets. For some  
 unknown reason this velvety red has not been impres-  
 sive here the last two summers.

(L 1-.25; 10-2.00) (M 2-.30; 10-1.20)  
 (S 10-.80) (Blbts. 15-.25; 100-1.00)

**Red Wing** ★★ ★ ★ (436) (Wright, 1948)  
 (85 days) (Seedling x  
 Red Charm) The foremost scarlet today is Red Wing;  
 a glad of noble stature. Lofty spikes of precision-like  
 build follow one another down the row, even from  
 small bulbs. The large, frilled, round florets with their  
 somewhat deeper throats are an exhibitor's joy and a  
 cut-flower grower's dream. Actually, Red Wing has  
 an enviable record on the show table opening up to  
 nine magnificent red florets. As a cut-flower, too, it  
 is being widely grown and sold. We consider it tops  
 in performance.

(L 2-.30; 10-1.20) (M 10-.80)  
 (S 10-.50) (Blbts. Pkg. .30)

**Regina** ★★ ★ ★ (520) (Palmer, 1953) (80  
 days) (Picardy x Orange  
 Gold) This huge light orange with apricot shadings  
 is a welcome new addition to our list of oranges. It  
 is ruffled, needlepointed and of very heavy substance.  
 Regina opens 7-8 well placed florets on long heads. It  
 is sure to please you.

(L 1-.40; 10-3.20) (M 1-.25; 10-2.00)  
 (S 1-.20; 10-1.60) (Blbts. 8-.25; 100-3.00)

**Rosario** ★★ ★ (460) (Fischer, 1953) (70  
 days) (Elizabeth the  
 Queen x Rose O'Day) This vivid, clean-cut rose is  
 the most trimly-tailored of the seven Noweta Rose  
 sisters and the only one with a blotch. A jewel for  
 consistency as well as beauty, it will readily carry 10  
 open florets in Sunday-go-to-meeting array. Trim as  
 a slate pencil, as the fashion ads would say. Rosario  
 rates high in the symposiums. An excellent field per-  
 former that produces an exceptionally fine bulb.

(L 1-.25; 10-2.00) (M 2-.30; 10-1.20)  
 (S 10-.80) (Blbts. 15-.25; 100-1.00)

**Rose Charm** ★★ ★ (360) (Fischer,  
 1948) (65 days)  
 (Lavender and Gold X (Maid of Orleans x Picardy))  
 Rose Charm charms the heart and pocketbook of the  
 grower of cut-flowers. A first early, it blooms at a  
 time when glads command a respectable price. Rose

## Ten-Spike Collection

1 large and 1 medium of each of the ten spikes  
 on the opposite page plus 1 large and 1 medium  
 of Golden Boy, Howard Wright, and Snowlad,  
 labelled.

A \$6.55 value for  
**\$4.25, Postpaid.**

←  
 Upper Picture (left to right): Crusader, Pacto-  
 lus, Carnival, Crown Jewel, Fire Opal.

Lower Picture (left to right): Gorgeous Deb,  
 Flora, Nordic Queen, Lavender Lace, Ginger.

## SEEDLINGS

In planting my unbloomed seedling bulbs there  
 are always quantities of bulblets that have fallen  
 off the mother bulb and remain in the bottom of  
 the tray. Instead of throwing these little gems  
 away, they were planted to give my customers  
 the thrill of looking over the unbloomed seed-  
 lings in search for that world-beater of tomor-  
 row.

**Mixed, M and S, 10-\$1.00;  
 100-\$8.00**

Charm is a fresh-toned, crystalline light rose with a  
 dramatic cream throat and midribs. From large bulbs  
 Rose Charm is an exceptionally tall, rangy grower.  
 It is indeed a delight to see those stretchy, steeple-  
 like spikes in an even line all the way down the row.  
 What a thrill!!! What cutting!!! What grand spikes for  
 basket work Spikes from small bulbs arrange well.  
 Try it with the deeper rose tones or purples.

(L 2-.30; 10-1.20) (M 10-.80)  
 (S 10-.50) (Blbts. Pkg. .30)

**Rosita** ★★ ★ ★ (563) (Woods, 1952) (85 days)  
 (Chamouny x Elizabeth the  
 Queen) To say that Rosita was the "Glamour Girl"  
 of our glad field last summer would not be an ex-  
 aggeration. She wears the color of Chamouny and  
 the ruffling of Elizabeth the Queen plus increased  
 height and size. The broad florets in double-row  
 placement constitute a lavish display of mouth-water-  
 ing rose tones. Healthy and vigorous. You can't miss  
 with Rosita.

(L 1-.25; 10-2.00) (M 2-.30; 10-1.20)  
 (S 10-.80) (Blbts. 15-.25; 100-1.00)

**Royal Scot** ★★ (470) (Taylor, 1952)  
 (80 days) (King Lear  
 x Elizabeth the Queen) Royal Scot is probably not  
 the equal of many of the new purples for beauty but  
 it does excel as a commercial. Its tall, serene spikes  
 made a lasting impression upon us last summer.  
 There is something restful and elegant about the color  
 of this regal Scotsman. He performs well, makes good  
 bulbs and is prolific.

(L 1-.25; 10-2.00) (M 2-.30; 10-1.20)  
 (S 10-.80) (Blbts. 15-.25; 100-1.00)

**Ruffled Dream** ★★ ★ ★ (440) (Fis-  
 cher, 1955)  
 (85 days) (Friendship x Evangeline) Ruffled Dream  
 is certainly one of the most beautiful varieties origi-  
 nated at Noweta Gardens. When you see this gor-  
 geous "dream pink," with its pearly lustre, heavy sub-  
 stance, perfect ruffling and finely sculptured form, you  
 will share our enthusiasm for it. Like its parent,  
 Friendship, Ruffled Dream is a model grower; it is  
 robust, makes clean, healthy bulbs and cuts especially  
 well from small bulbs. Like Evangeline it has an up-  
 ward lilt to the floret but we have found this quality  
 an asset in using it in floral compositions. When the  
 florets face perfectly one could not wish for a finer  
 specimen for exhibition. See our halftone cut on page  
 32. Each precisely formed floret is enlivened with a  
 soft creaminess in the throat. When Ruffled Dream  
 blooms in your garden it will be an event.

(L 1-.60; 10-4.80) (M 1-.40; 10-3.20)  
 (S 1-.25; 10-2.00) (Blbts. 5-.25; 50-1.75)

"Ruffled Dream is a beautiful shell pink. Was divi-  
 sion champ at Algona, Iowa for us. 10 open in perfect  
 formation."—Marvin & Melvin Schrimpf, Minnesota.

**Ruffled Ebony** ★★☆☆ (454) (Fischer, 1953) (70 days) (Melrose x Black Diamond) For a deep organ tone in the symphony of glad colors try midnight-hued Ruffled Ebony. This congo colored glad is rich in color appeal. Its brilliance of sheen makes it appear as though the flowers had been recently polished. You will thrill at its chiseled perfection of form and lavish ruffling. It has but 16 buds and opens 5 or 6 florets, but what beauty! It is the only glad in its color class that has those broad petalled, round florets that suggest opulence and substance like leather. Ruffled Ebony is a sure stopper with garden visitors.

(L 1-.25; 10-2.00) (M 2-.30; 10-1.20)  
(S 10-.80) (Blbts. 8-.25; 25-.75)

"Of all the many hundreds of glads we have grown in the past 28 years, Ruffled Ebony tops them all. True we have grown many that were easier to get to show quality spikes but I do not recall any glad that has had the beauty of the individual floret as has Ruffled Ebony. Certainly it will go down in glad history as the most outstandingly beautiful in depth of color. Its richness, ruffling and intensity of color plus its beautiful sheen make it the one glad we look forward to seeing more than any other. The buds in our soil are coal black and people always marvel at it. It's a knockout! One that I am glad to see getting ahead is White Lace. Here is one everyone should grow. Like most men I like big but I will never be without White Lace. Glads just don't come more beautiful."

—Ken Lindsey, Illinois.

"Although we do not select a Reserve Champion, to me the spike next to the Grand Champion was Ruffled Ebony which I grew from a free bulb you sent me."

—Paul C. Franklin, Jr., South Carolina.

"Ruffled Ebony is so charming. I never knew a glad could be so black, have such depth of coloring and gorgeous ruffling."

—Mrs. Henry Kream, Minnesota.

**Salman's Glory** ★★☆☆ (507) (Salman, 1947) (68 days) This immense tall cream with a scarlet blotch is the glory of the grower of early cut-flowers. Along with Friendship, Rose Charm, and Cupid, Salman's Glory is an outstanding "First Early." This glory of the garden has an excellent report card.

(L 2-.30; 10-1.20) (M 10-.80)  
(S 10-.50) (Blbts. Pkg. .30)

### **Salman's Sensation** ★★☆☆

(578) (Salmon, 1953) (90 days) A five-foot heavy-substanced, medium blue that has been a sensation for many fans. The largest and tallest of all the blues. Cuts well from small sizes. Here to stay awhile.

(L 1-.50; 10-4.00) (M 1-35; 10-2.80)  
(S 1-.25; 10-2.00) (Blbts. 4-.25; 10-.50)

**Sandman** ★★☆☆ (486) (Butt, 1941) (85 days) (Picardy x Rosabella) Sandman has superb, sculptured florets of a smooth, sandy-salmon hue with a sharp disk of ivory in the throat. What a spike maker!

(L 2-.30; 10-1.20) (M 10-.80)  
(S 10-.50) (Blbts. Pkg. .30)

**Sans Souci** ★★☆☆ (436) (K & M, 1951) (85 days) (J. V. Konynenberg x Joe Wagner) Named after Frederick the Great's pleasure palace at Potsdam ("Without Care"). This spire-like scarlet beckons across the field. Its rounded florets have an easy grace, its color

a lucent glow. Robust and precocious, few glads cut as well from small sizes. Sans Souci is deserving of its rank as a leading scarlet.

(L 2-.30; 10-1.20) (M 10-.80)  
(S 10-.50) (Blbts. Pkg. .30)

### **Sierra Snow** ★★☆☆ (400) (Harris, 1951) (80 days)

(Arctic Snow x Elizabeth the Queen) White as new-fallen snow on the lofty Sierras is this variety. As the Sierras are high among mountains so is Sierra Snow tall among glads. A grand commercial that opens many large, ruffled florets at once. The connoisseur will object some to the tawny, cream throat overlaid with a faint purple line but nonetheless this snowy glad deserves a spot in every garden.

(L 2-.30; 10-1.20) (M 10-.80)  
(S 10-.50) (Blbts. Pkg. .30)

### **Snow Clad** ★★☆☆ (400) (Harris, 1953) (80 days)

(Florence Nightingale x White Sport of Elizabeth the Queen) Another grand white from the brush of one of America's foremost hybridizers, Jack W. Harris. He already has given us Florence Nightingale and Sierra Snow, and now, Snowclad seems destined to be widely grown, also. It is a clean-cut, starchy, cream-throated, alabaster white; a 5-6 footer!

(L 1-.50; 10-4.00) (M 1-35; 10-2.80)  
(S 1-.25; 10-2.00) (Blbts. 4-.25; 10-50)

### **Snowdrift** ★★☆☆ (400) (Fischer, 1954) (75 days)

(White Christmas x Dawn Glow) Snowdrift won 5 grand championships a year ago and three last summer at major glad shows! An enviable record indeed!

This ruffled, waxy, snow-sculptured stylist is a flower one dreams about but rarely sees. While enjoying its grace, elegance and purity one is moved by a silent message from above. From mid-season on until frost our crew gravitated to Snowdrift while cutting flowers for the florists. Small bulbs produce marketable spikes. It opens very well from tight bud, is an average propagator, and a rugged grower from bulblets. Make Snowdrift a new star to grace your garden!

(L 1-.50; 10-4.00) (M 1-35; 10-2.80)  
(S 1-.25; 10-2.00) (Blbts. 4-.25; 10-50)

"Snowdrift is blooming today with eight beautiful, heavy textured, ruffled blooms. Snowdrift is the white supreme!"

—K. M. Coudrey, Nova Scotia.

"Today I have 5 wonderful spikes of Snowdrift . . . All 5 have heads 26" and 27" with 7 to 10 open and perfectly placed. This is one swell glad, a real champion and not fussy about the care it gets."

Mike Hegarty, Nebraska.

### **Southern Belle** ★★☆☆ (484) (Fischer, 1952) (75 days)

(Friendship x Dawn Glow) The gracious lady of our glad planting, Southern Belle, is a vivid pink with a contrasty, snowy throat. A silvery blue aura places it in the smoky class where it truly belongs. The color picture on page 33 does not catch the smoke tone. We have had huge quantities of perfectly magnificent Southern Belle.

(L 2-.30; 10-1.20) (M 10-.80)  
(S 10-.50) (Blbts. Pkg. .30)

"Your varieties have really been outstanding. No-weta Rose won at Brandon and Summer Queen at Newdale."

—Stan Gugin, Manitoba.

**Sparkling Eyes**  $\frac{\star\star\star}{\bullet\bullet\bullet}$  (4) (Jack, 1953) (85 days) (Better Times X (Greta Garbo x Dawn Glow)) A honey! This stretchy white with eye-riveting violet-purple blotches opens a real ribbon of bloom. You'll never forget Sparkling Eyes! A handsome glad appropriately named. Produces handsome bulbs, too!

(L 1-.30; 10-2.50) (M 1-.20; 10-1.20)  
(S 2-.20; 10-.70) (Blbts. 10-.25; 100-2.00)

**Spic and Span**  $\frac{\star\star\star\star}{\bullet\bullet\bullet\bullet}$  (442) (Carlson, 1946) (80 days) (Picardy x New Era) Spic and Span has enjoyed meteoric yet prolonged popularity. Introduced in 1946 at \$5.00 per bulb it has replaced Picardy as the leading gladiolus cut-flower in less than a decade. Florida growers use it extensively. Nor are the commercial growers the only ones to recognize "Spic's" merit. Hobbyists have won more ribbons with this variety in recent years than with any other. In fact, many show chairmen have considered making a special Spic and Span class in order to give other pinks a sporting chance.

(L 2-.30; 10-1.20) (M 10-.80)  
(S 10-.50) (Blbts. Pkg. .30)

**Stormy Weather**  $\frac{\star\star\star}{\bullet\bullet\bullet}$  (480) (Barrett, 1947) (80 days) (Ivy Robertson x Elizabeth the Queen) Like changeable silk is the subtle combination of rose and grey with an undertone of salmon in this original glad. Stormy Weather is a leading smoky. It will open from 7-10 cream-throated florets on tall willowy spikes. Cuts well from small or medium bulbs.

(L 2-.30; 10-1.20) (M 10-.80)  
(S 10-.50) (Blbts. Pkg. .30)

**Summer Queen**  $\frac{\star\star\star}{\bullet\bullet\bullet}$  (542) (Fischer, 1955) (80 days) (E. C. Cole x Burma) Cut-flower growers who can no longer grow Picardy and who think Spic and Span is not large enough, may find Summer Queen to be their best salmon-pink. It opens 8 large, ruffled florets of heavy substance on straight stems of medium strength and good height.

The florets sometimes have a mild flecking, making this variety appear more ruffled than is actually the case. The heavy substance of the flowers contributes to easy handling without bruising or crushing. The color is a pleasing salmon, somewhat warmer in tone than Spic and Span. An armful has an attractive quality that quickly catches the eye of the florists.

Makes particularly healthy plants and bulbs that are round, plump, and smooth. Summer Queen is a very heavy producer of bulblets that germinate easily and grow rapidly into the larger sizes.

But, its value is not restricted to cut-flower growing; the attractive ruffling will please many fanciers and its capacity to build model spikes with many open should make it a popular variety for exhibitors. Larger bulbs should be planted deeper to support the heavy flower-head.

We have received many enthusiastic testimonials on Summer Queen.

(L 1-.25; 10-2.00) (M 2-.30; 10-1.20)  
(S 10-.80) (Blbts. 15-.25; 100-1.00)

"This season is even worse for heat and drought than last year, but Summer Queen is even better. I think it is one of the finest pink glads I have ever grown."  
—Bruce Collins, Michigan.

"Of all the glads you sent us we liked Summer Queen the best. It made such nice straight spikes, and the color and texture were fine. It surely doesn't belong in the class of just another salmon-pink."

—Florence and Leslie Ash, Minnesota.

"I thought you would be interested in knowing that Summer Queen was Reserve Champion at the Victoria Gladiolus show. The exhibitor was Dr. H. Maitland Young. The Purple Burma and Summer Queen you sent me are out this morning. They are perfect blooms, why, oh why, couldn't they have opened for me last week!"  
—B. A. Setchell, British Columbia.

**Sweet Sixteen**  $\frac{\star\star\star\star}{\bullet\bullet\bullet\bullet}$  (440) (Fischer, 1951) (75 days) (Sport of Beauty's Blush) The dream-girl of the glad world, a fresh-toned, angelic pink that is destined for tremendous popularity. As a sport of Beauty's Blush, Sweet Sixteen shares the same magnificent growing habits, the same ease of growth from bulblets, the same capacity to throw five-foot spikes right down the row, each carrying, on bamboo-like stems, 7-9 open florets. You would have to look a long ways to find a finer cutter. Although listed with the pure pinks, Sweet Sixteen is a trifle cooler than Friendship. Without ruffles, Sweet Sixteen nevertheless has such beautifully rounded florets, such a serene styling, such perfect placement that like Beauty's Blush, which it exactly duplicates in form, it constitutes a criterion for plain-petalled beauty.

(L 2-.30; 10-1.20) (M 10-.80)  
(S 10-.50) (Blbts. Pkg. .30)

**Tan-Glo**  $\frac{\star\star\star}{\bullet\bullet\bullet}$  (480) (Arenius, 1954) (90 days) (Connecticut Yankee x Elizabeth the Queen) Tan-Glo is a soft, rosy, light tan that has catapulted to immediate popularity. The leading exhibition smoky. It opens ten five-inch florets on long heads. Not extra fancy but it is a good performer.

(L 1-1.00; 10-8.00) (M 1-.75; 10-6.00)  
(S 1-.50; 10-4.00) (Blbts. 6-.25; 100-3.00)

**The Rajah**  $\frac{\star\star\star}{\bullet\bullet\bullet}$  (570) (Jack, 1951) (85 days) ((Picardy x Rosemarie Pfitzer) X King Lear) Robed in all the richness of an Indian potentate, The Rajah ranks supreme in the purple class. It is our choice for the leading purple. King David can be more beautiful but The Rajah has more vigor. For show table purposes this resplendent true-purple has some placement trouble but this is soon forgotten when one beholds the 8 crisp, round, ruffled florets of lustrous sheen on model twenty bud spikes. We love its color and cutting habits.

(L 2-.30; 10-1.20) (M 10-.80)  
(S 10-.50) (Blbts. Pkg. .25)

**Tivoli**  $\frac{\star\star\star}{\bullet\bullet\bullet}$  (442) (K. & M., 1947) (85 days) (Greta Garbo x Mesdag) Tivoli tops all other pinks in its class as an exhibition variety. This ruffled, cream-throated pink can be a rangy grower. A most ethereal color.

(L 2-.30; 10-1.20) (M 10-.80)  
(S 10-.50) (Blbts. Pkg. .30)

**Traveler**  $\frac{\star\star\star\star}{\bullet\bullet\bullet\bullet}$  (460) (Torrie-Flad, 1952) (85 days) (Oriental Pearl x Eglantine) With this glad in your garden you are sure to do some "traveling"—not away from it but with it to the nearest glad show! Traveler, a light rose pink with a faint deep-rose blur in the throat, sends up a majestic spike carrying 10-12 open on a 22-24 bud head. Florets are well attached, nicely frilled, and good texture. Traveler has already made a name for itself in exhibition circles and should prove equally valuable as a cut-flower. Bulblets germinate well and make fine bulbs.

(L 1-.50; 10-4.00) (M 1-.35; 10-3.00)  
(S 1-1.25; 10-2.00) (Blbts. 8-.25; 100-2.00)



**Ruffled Dream**

**Tyrone** ★★ ★ (466) (Deam, 1952) (80 days)  
 . . . The unusual form of florets is the first thing one notices in Tyrone. They are a clear lavender at the recurved and pointed edges blending to a light lavender center. Tyrone has won considerable fame on the show table opening up to 9. It has a commercial future, too.

(L 1-.25; 10-2.00) (M 2-.30; 10-1.20)  
 (S 10-.80) (Blbts. 15-.25; 100-1.00)

**Violet Charm** ★★ ★ (476) (Jack, 1953) (85 days)  
 . . . (Better Times X (Greta Garbo x Dawn Glow) The soul of the flower lover is perennially hungry for blue. Violet Charm is a soft shadowy violet with a blue throat. We understood its immediate rise to popularity when we viewed the distinctive blue-throated spikes. It was an ace performer last summer in all the heat. Bulbs are round and plump as apples.

(L 1-.30; 10-2.50) (M 1-.20; 10-1.50)  
 (S 2-.20; 10-.80) (Blbts. 10-.25; 100-1.50)

**Wedgwood** ★★ ★ (366) (Fischer, 1947) (70 days)  
 . . . (Lavender & Gold x Seedling) Small-flowered, graceful Wedgwood exhibits the refinement and strength of precious Wedgwood china. The lavish ruffling, waxy substance, and warm lavender coloring are further enhanced by a soft creamy throat

(L 2-.30; 10-1.26) (M 10-.80)  
 (S 10-.50) (Blbts. Pkg. .30)

**White Goddess** ★★ ★ (500) (Roberts, 1948) (80 days)  
 . . . (Myrna x Heritage) This lovely ruffled white throws a five-foot spike quite consistently. It is well known as a commercial.

(L 2-.30; 10-1.20) (M 10-.80)  
 (Blbts. Pkg. .30)

**White Lace** ★★ ★ (300) (Fischer, 1951) (70 days)  
 . . . ((Elizabeth the Queen x Lavender and Gold) X Starlet) White Lace has the substance of an Easter Lily plus exquisite ruffling so intense it produces that puckered effect in the throat called "knuckles"—found only in a very few glads of lavishly beautiful form. If you want a glad that is absolutely tops for wedding decorations and choice make-up work, depend on White Lace. It is cheap enough now that you can cut it by the armful. See the lovely color picture on page 17 and the attractive offers above it.

(L 2-.30; 10-1.20) (M 10-.80)  
 (S 10-.50) (Blbts. Pkg. .30)

**Wild Rose** ★★ ★ (460) (Fischer, 1955) (80 days)  
 . . . (Beauty's Blush x Rose Charm) A happy combination of two great breeders. The cross that produced Noweta Rose and its sisters was our most productive one, but, we believe that when Wild Rose and some of its sisters yet to be introduced become well known this will prove to be our best cross. Appleblossom is a sister seedling of Wild Rose.

Words are much less effective than the dramatic and accurate picture, see page 16, in describing the poise and personality of this rosy flower. Magnify this rendition in printer's ink about 5 times and you have Wild Rose! It opens 7 and 8 heavy-substanced, cream throated florets on tall, graceful spikes that stand as erect as ten-pins. Because of its beauty and model behavior in every way we predict Wild Rose will be one of our leading introductions and will be widely grown.

(L 1-.60; 10-4.80) (M 1-.40; 10-3.20)  
 (S 1-.25; 10-2.00) (Blbts. 10-.25; 100-1.75)



# COLLECTION OF 19 SUPER-GIANTS

If you are receiving this catalog for the first time and don't know what to buy, here is the ideal place to start.

If you want to astonish your neighbors and friends by growing some really colossal glads in your garden, we recommend the following collection, carefully selected not only for outstanding size and height, but for color-variety. So you may realize what giants these glads really are, we have indicated below the actual size of well-grown specimens. **To the best of our knowledge this collection embraces most of the largest glads now in commerce.** Whether you are a beginner or a connoisseur, you will want these outstanding glads in your gardens!

Variety	Color	No. Open At Once	Size of Floret	Height	Price Each
1. Boldface	Light Red	6-7	6"	59"	.15
2. Circe	Bright Orange	5-6	6"	58"	.15
3. Dark David	Maroon	5-7	6"	60"	.15
4. Forysthia	Yellow	6-7	5¼"	58"	.25
5. Francesca	Lavender	6-8	5"	58"	.35
6. Harrisburger	Red	7-8	5¼"	60"	.50
7. Julia Mae	Rose-pink	6-8	5¼"	59"	.25
8. Leif Erickson	Cream	6-8	5½"	58"	.15
9. Noweta Rose	Rose	10-12	5½"	60"	.15
10. Pasteline	Pink	6-7	5-6"	62"	.15
11. Prof. Goudrian	White	6-8	6"	60"	.15
12. Prospector	Yellow	6-8	5"	58"	.50
13. Purple Burma	See page 37	7-9	6"	58"	.35
14. Rosita	Rose	7-9	6"	60"	.25
15. Salman's Sensation	Blue	6-8	5-6"	60"	.50
16. Snowdrift	See Back Over	7-10	5¼"	56"	.50
17. Summer Queen	Salmon	7-9	6"	59"	.25
18. Tan Glo	Smoky	8-10	5¼"	58"	1.00
19. Traveler	Rose-pink	10-12	5"	58"	.50

One large bulb of each: Total Catalogue Value ----- \$6.20

Single Collection (a \$6.20 value) for ----- \$ 4.50

Double Collection (a \$12.40 value) for ----- 8.50

Triple Collection (an \$18.60 value) for ----- 12.50

Quadruple Collection (a \$24.80 value) for ----- 16.50

Quintuple Collection (a \$31.00 value) for ----- 20.50

Sextuple Collection (a \$37.20 value) for ----- 24.50

**For one of the TOP THRILLS of your gardening career, order one or more of these collections of Super-Giants!**

# QUANTITY PRICE LIST--Not Prepaid

THIS LIST SUPERCEDES ALL PREVIOUS LISTS.

Small orders from this list can be shipped cheaper by parcel post. Please send sufficient postage to cover if wanted by mail.

Approximate weight per 100 bulbs packed: No. 1—7½ lbs.; No. 2—5½ lbs.; No. 3—4 lbs.; No. 4—2 lbs., No. 5—1 lb.; No. 6—½ lb.; Bulblets, qt.—1½ lbs.

Prices indicated are F.O.B. St. Charles, Minn. 25 or more bulbs of the same size and variety will be sold at the hundred rate.

PRICE PER 100	1½ in. up 1	1¼ in. to 1½ in. 2	1 in. to 1¼ in. 3	¾ in. to 1 in. 4	½ in. to ¾ in. 5	½ in. down 6	½ Pt.	Bulblets Qt.
ACE OF SPADES	14.00	12.00	10.00	8.00	7.00	6.00	8.00	25.00
ATOM	6.00	5.00	4.00	3.00	2.00	1.50	1.50	5.00
AUTUMN MOON	6.00	5.00	4.00				1.50	4.00
BEAUTY'S BLUSH*	6.00	5.00	4.00	3.00	2.00	1.50	1.50	4.00
BETTY DUNCAN*	6.00	5.00	4.00	3.00	2.00	1.50	1.50	5.00
BOLD FACE	7.00	6.00	5.00	4.00			2.00	7.00
BO-PEEP	6.00	5.00	4.00	3.00	2.00	1.50	1.50	4.00
BURMA*	6.00	5.00	4.00	3.00	2.00	1.50	1.00	3.00
CATHERINE BEATH	16.00	12.00	10.00	8.00	7.00	5.00	10.00	35.00
CARNIVAL		6.00	5.00	4.00	3.00	2.00	1.50	5.00
C. D. FORTNAM*	6.00		4.00	3.00	2.00	1.50	1.50	4.00
CIRCE	6.00	5.00	4.00				2.00	6.00
COLUMBIA	6.00	5.00	4.00	3.00			1.50	4.00
CORAL ACE	14.00	12.00	10.00	8.00	7.00	5.00	7.00	20.00
CREAM ORCHIDS*	6.00	5.00	4.00	3.00	2.00	1.50	1.50	4.00
CROWN JEWEL	6.00	5.00	4.00	3.00	2.00	1.50	1.50	4.00
CRUSADER*	12.00	10.00	8.00	6.00	5.00	4.00	2.00	6.00
CUPID*	6.00	5.00	4.00	3.00	2.00	1.50	1.50	4.00
DARK DAVID	7.00	6.00	5.00	4.00	3.00	2.00	2.00	7.00
DIEPPE*	6.00	5.00	4.00	3.00	2.00	1.50	1.50	4.00
DOLLY VARDEN	7.00	6.00	5.00	4.00	3.00	2.00	2.00	7.00
DUSK	14.00	12.00	10.00	8.00	7.00	6.00	8.00	25.00
EDGEWOOD	32.00	25.00	20.00	18.00	15.00	12.00	15.00	50.00
ELIZABETH THE QUEEN	6.00	5.00					1.50	4.00
ELMER'S ROSE*	6.00	5.00	4.00	3.00	2.00	1.50	1.50	5.00
EVANGELINE	6.00	5.00					1.00	3.00
FIRE OPAL	32.00	25.00	20.00	18.00	15.00	12.00	20.00	60.00
FLORENCE NIGHTINGALE*	6.00	5.00	4.00	3.00	2.00	1.50	1.00	3.00
FLORENTINE*	6.00	5.00	4.00	3.00	2.00	1.50	1.50	5.00
FORSYTHIA			10.00	8.00	7.00	5.00	8.00	25.00
FRANCESCA*	14.00	12.00	10.00	8.00	7.00	6.00	8.00	25.00
FRIENDSHIP*	6.00	5.00	4.00	3.00	2.00	1.50	1.50	4.00
GENE*	6.00	5.00	4.00	3.00	2.00	1.50	1.50	4.00
GINGER	8.00	7.00	6.00	5.00	4.00	3.00	3.00	10.00
GOLD*	7.00	6.00	5.00	4.50	4.00	3.00	3.00	9.00
GOLDEN BOY	32.00	25.00	20.00	18.00	15.00	12.00	30.00	90.00
GORGEOUS DEB	12.00	10.00	8.00				5.00	15.00
HARRISBURGER	30.00	25.00	20.00	18.00	15.00	12.00	15.00	50.00
HELIOS			5.00	4.00	3.00	2.00	2.00	7.00
HOWARD V. WRIGHT	25.00	22.00	19.00	16.00	14.00	12.00	8.00	25.00
JULIA MAE	12.00	10.00	8.00	6.00	4.00	3.00	5.00	15.00
JUNO	32.00	25.00	20.00	18.00	15.00	12.00	15.00	50.00
KAREN	32.00	25.00	20.00	18.00	16.00	14.00	20.00	70.00
KING DAVID	6.00	5.00	4.00	3.00	2.00	1.50	1.50	4.00
KING LEAR	5.00	4.00	3.00				1.00	3.00

THIS LIST SUPERCEDES ALL PREVIOUS LISTS.

PRICE PER 100	up 1½ in. 1	1¼ in. to 1½ in. 2	1 in. to 1¼ in. 3	¾ in. to 1 in. 4	½ in. to ¾ in. 5	½ in. down 6	½ Pt.	Bullets Qt.
KNIGHTHOOD	6.00	5.00	4.00	3.00	2.00	1.50	1.50	4.00
LADY ANNE	6.00	5.00	4.00	3.00	2.00	1.50	1.50	4.00
LADYKILLER	6.00	5.00	4.00	3.00	2.00	1.50	1.50	4.00
LAVENDER LACE*	6.00	5.00	4.00	3.00	2.00	1.50	1.50	4.00
LAVENDER PETUNIA	20.00	15.00	12.00	10.00	8.00	7.00	20.00	50.00
LITTLE GOLD	6.00	5.00	4.00	3.00	2.00	1.50	1.50	4.00
LIEF ERICKSON*	6.00	5.00	4.00	3.00	2.00	1.50	1.50	4.00
LOOK	30.00	26.00	22.00	18.00	14.00	10.00	15.00	50.00
MAGNET*	6.00	5.00	4.00	3.00	2.00	1.50	1.50	4.00
MARGERY	32.00	25.00	20.00	18.00	15.00	12.00	20.00	60.00
MESA MIST*	6.00	5.00	4.00	3.00	2.00	1.50	1.50	5.00
MIXTURE*	4.00	3.00	2.50	2.00	1.50	1.00	.35	1.00
MOTHER FISCHER*	6.00	5.00	4.00	3.50	3.00	2.00	3.00	10.00
NORDIC QUEEN	16.00	14.00	12.00	10.00	8.00	6.00	10.00	
NOWETA ROSE	6.00	5.00	4.00	3.00	2.00	1.50	1.50	4.00
ORCHID FRILLS	32.00	28.00	24.00	20.00	16.00	12.00	15.00	45.00
PACTOLUS*	6.00	5.00	4.00	3.00			1.50	4.00
PALLETTE*	6.00	5.00	4.00	3.00	2.00	1.50	1.50	5.00
PASTELINE	6.00	5.00	4.00					
PATROL	6.00	5.00					2.00	6.00
PINK CHIFFON*	14.00	12.00	10.00	8.00	7.00	5.00	8.00	25.00
PINK DIAMOND	32.00	28.00	24.00	20.00	16.00	12.00	15.00	50.00
PINK DOTS	10.00	8.00	6.00	5.00	4.00	2.00	3.00	9.00
PRINCESS	25.00	22.00	19.00	16.00	14.00	12.00	12.00	40.00
PROSPECTOR	32.00	28.00	24.00	20.00	16.00	12.00	20.00	60.00
PURPLE BURMA*	25.00	22.00	19.00	16.00	14.00	12.00	8.00	25.00
RECOMPENSE	25.00	22.00					20.00	60.00
RED RADIANCE	32.00	28.00	24.00	20.00	16.00	12.00	20.00	60.00
RED WING	6.00	5.00	4.00	3.00	2.00	1.50	2.00	6.00
ROSARIO	14.00	12.00	10.00	8.00	7.00	5.00	8.00	25.00
ROSE CHARM	6.00	5.00					1.00	3.00
ROSITA	16.00	14.00	12.00	10.00	8.00	6.00	6.00	20.00
RUFFLED EBONY			8.00	6.00	5.00	4.00	10.00	35.00
SALMAN'S GLORY*				2.50	1.50	1.00	1.00	3.00
SALMAN'S SENSATION	25.00	22.00	18.00	15.00	13.00	10.00	12.00	40.00
SANS SOUCI*	6.00	5.00	4.00	3.00	2.00	1.50	2.00	6.00
SIERRA SNOW*	8.00	7.00	6.00	4.50	3.00	2.00	4.00	12.00
SNOWCLAD	32.00	25.00	20.00	18.00	15.00	12.00	20.00	60.00
SNOWDRIFT	32.00		20.00	18.00	15.00	12.00	20.00	60.00
SNOW PRINCESS*	4.00	3.00					1.00	3.00
SOUTHERN BELLE	6.00		4.00	3.00	2.00	1.50	1.50	4.00
SPARKLING EYES	19.00	16.00	12.00	9.00	7.00	5.00	12.00	40.00
SPIC & SPAN*	6.00	5.00	4.00	3.00	2.00	1.50	1.50	4.00
STARLET	6.00	5.00	4.00				1.50	4.00
STORMY WEATHER	6.00	5.00	4.00	3.00	2.00	1.50	2.00	6.00
SUMMER QUEEN	14.00	12.00	10.00	8.00	7.00	5.00	8.00	25.00
SUNDANCE	6.00	5.00	4.00	3.00	2.00		1.50	4.00
SWEET SIXTEEN*	6.00	5.00	4.00	3.00	2.00	1.50	1.50	4.00
TAN-GLO	48.00	40.00	36.00	30.00	24.00	18.00	30.00	100.00
THE RAJAH*	6.00	5.00	4.00	3.00	2.00	1.50	1.50	4.00
TRAVELER	32.00	25.00	20.00	18.00	15.00	12.00	20.00	60.00
TYRONE	16.00	14.00	12.00	10.00	8.00	6.00	8.00	25.00
VIOLET CHARM	16.00	14.00	12.00	10.00	8.00	6.00	8.00	25.00
WHITE LACE*		5.00	4.00	3.00	2.00	1.50	1.50	4.00
WILD ROSE	35.00	30.00	25.00	20.00	15.00	10.00	20.00	60.00
YELLOW HERALD*	5.00	4.00					1.00	3.00
WEDGWOOD*		5.00	4.00	3.00			2.00	5.00

THIS LIST SUPERCEDES ALL PREVIOUS LISTS.

\* Varieties marked with asterisk may be had by the 1000. Multiply the 100 price by 8 to obtain the 1000 price. 250 may be purchased at the 1000 rate.

# WIN BLUE RIBBONS AT YOUR SHOW!

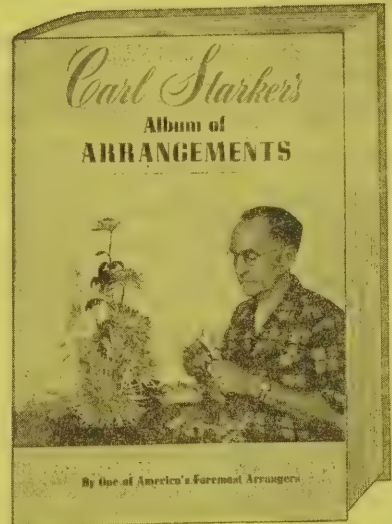
## Carl Starker's ALBUM OF ARRANGEMENTS

Brings You 224 Outstanding Arrangements

NOW—IN ONE AMAZING VOLUME

- 200 Black & White Photographs
- 24 Prize-winning Four-color plates
- Over 300 pages of Ideas and Beauty  
TO HELP YOU ARRANGE FLOWERS

All Copies are sent postpaid **\$7.50**



Brings you 224 outstanding arrangements (33 using glads); 200 black and white photographs; and, 24 prize-winning four-color plates. Packed with ideas to help you arrange flowers. All of the arrangements in this catalog were made by Mr. Starker.

Here is a book you will treasure in your library and one which your relatives and friends

will enjoy receiving as a gift, for it is not only "a thing of beauty" which is "a joy forever," but it is invaluable in a practical sense, to those who wish to beautify their home with flowers.

Obtainable only for the regular retail price of \$7.50, Postpaid. If not completely satisfied, return the book within 10 days and your money will be refunded.

### The Gladiolus Classification System

The number after the name of each variety in our general descriptive list denotes the official size and color classification of that variety as determined by a committee of the North American Gladiolus Council. We list these classification numbers because they are helpful to customers in determining the exact size and color classification of varieties they may want to buy or to exhibit at glad shows conducted under the auspices of the N.A.G.C., where this classification system is used.

Glads are classified in five sizes as follows:

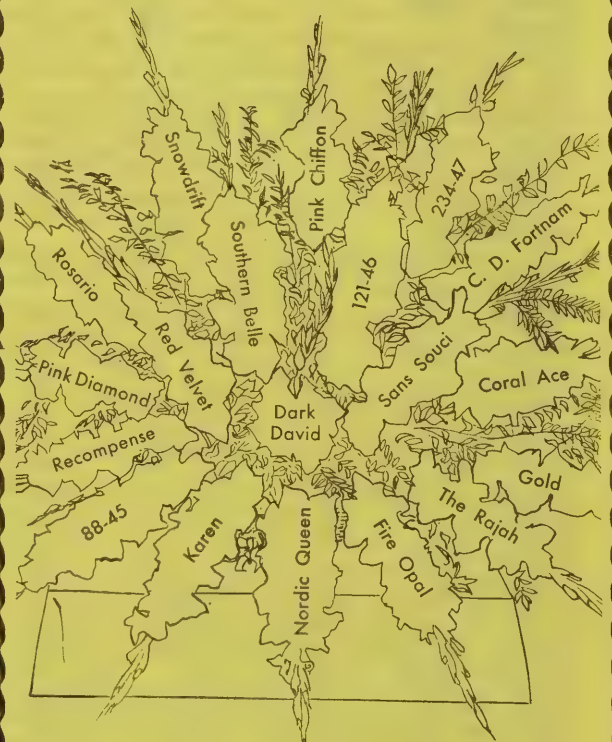
- Miniature .....100—florets under 2½"
- Small .....200—2½" through 3¼"
- Medium .....300—3¼" through 4⅜"
- Large .....400—4½" through 5⅝"
- Giant .....500—5½" or larger

For instance, the first variety described in the alphabetical list, Abu Hassan, is followed by the number 378. The 300 means it has a floret size from 3¼" through 4⅜". The 78 designates this variety as a deep violet. Hence the numbers after the variety names tell the story of the size and color of the individual floret as grown under field conditions from large bulbs.

#### COLOR CLASSES

Class		50 Red	50 (Light)
00 White	00 without conspicuous marking	Red	52 (Deep)
White	01 with conspicuous marking	Red	54 (Black)
Cream	06	60 Rose	60 (Light)
10 Yellow	10 (Light)	Rose	62 (Deep)
Yellow	12 (Deep)	Lavender	66
Buff	16	70 Purple	70
20 Orange	20 (Light)	Violet	76 (Light)
Orange	22 (Deep)	Violet	78 (Deep)
Orange	24 (Red Orange)	80 Smoky shades	
30 Salmon	30 (Light)	Smoky	82 (Orange Smoky)
Salmon	32 (Deep)	Smoky	83 (Salmon Smoky)
Scarlet	36	Smoky	84 (Pink Smoky)
40 Pink	40 (Light)	Smoky	85 (Red Smoky)
	without markings	Smoky	86 (Lavender Smoky)
Pink	41 (Light)		
	with c. markings	90 Any other color.	
Pink	42 (Deep)		

### Colorama Collection



This giant basket contains 16 of the newer and more talked of show winners plus three of our outstanding seedlings, free. A real bargain!



## **COLORAMA COLLECTION**

1 large and 1 medium bulb of each variety above, 38 bulbs in all, labelled,  
(for identification see opposite page).

An \$8.00 value for **\$6.50** Postpaid.

# Miniatures-Why Grow Them?

We never cared enough for the small glads to list very many of them. We didn't think they were very pretty, but with the increased demand for the small ones, hybridizers have bred more beauty and greater vigor into them. More needs to be done yet but we feel that these "babies" in the glad world are carefully selected and worthy of your garden space. We have rated them for beauty according to our starring system explained on page 11 but have omitted the commercial rating because many of the larger growers do not think they are big enough for shipping.

But, why grow miniatures, there are so many beautiful colors and forms in the large flowering ones? Miniatures are especially suited for home decoration! If you love your glads you will want to bring them into the house with you. You'll want to put them together. You will find the small ones more in scale with your rooms and furniture. Carl Starker loved the little ones best. The stems are so wiry and graceful. If you haven't tried your hand at working with smaller glads we recommend that you grow our arrangement collection, offered on page 38. 300 size glads are adept for arrangement work, too, and we have included some of them also. Alert florists are beginning to ask for miniatures. Last summer our Rochester florists took all we produced and paid the same price for them as for large glads.

We are offering mixed sizes of our miniatures except in the Arrangement Collection. Insofar as we are able we will send equal amounts of large, medium and small. If we are out of large we will send a larger quantity of medium and small. Some miniatures don't make large bulbs readily; their small stature carrying over into the bulb, and then, most miniatures bloom just about as well from medium and small. With the mixed sizes you will also have a greater succession of bloom. We wish you well with your miniatures. You will find them exciting!

**Atom** ★ ★ ★ (236) (Hedgecock, 1946) (80 days)  
(Kewpie x Golden Brown) A dashing, dancing, dazzling little elf. He's robed in brilliant scarlet and he wears a creamy white halo at all times. He craves to come right in the house with you and loves to be surrounded with other flowers. He admires creamy yellows, whites, reds, and bronzes. In the garden he is hale and hearty, and in storage, outshines his neighbors.

(Mixed Sizes, 2-.25; 12-1.00)  
(Blbts. Pkg. .30)

**Babs** ★ ★ ★ (210) (R. Pruitt, 1945) (65 days)  
Like most of the miniatures we list, Babs blooms very early. It is a small counterpart of Aureole in color, ruffling, and form. We know you'll enjoy using Babs and don't overlook its ability to win ribbons.

(Mixed Sizes, 2-.25; 12-1.00)  
(Blbts. Pkg. .30)

**Bo-Peep** ★ ★ ★ (240) (Butt, 1948) (65 days)  
(Crinklette x Mibloom)  
Bo-Peep is one of a fine collection of small glads introduced by the Canadian hybridizer, Len Butt, who

has an impressive selection of miniature seedlings coming on. The salmony-buff color of little Bo-Peep combines beautifully with warm-toned glads and other flowers. A robust grower, it produces exceptionally large bulblets.

(Mixed Sizes, 2-.25; 12-1.00)  
(Blbts. Pkg. .30)

**Cutie** ★ ★ ★ (241) (Kundred, 1940) (70 days)  
Just that! The cutest little glad, a face up! Try using it and you'll find it so easy to put together. I'd classify it as a light rose (261) with a creamy throat instead of a light pink.

(Mixed Sizes, 1-.25; 10-2.00)  
(Blbts. 25-.40)

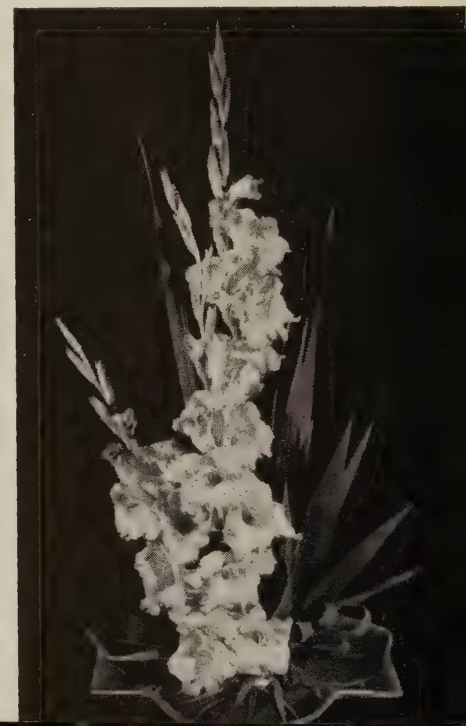
**Daintiness** ★ ★ ★ ★ (Butt, 1953) (200)  
(70 days) In our estimation the best white miniature. The heavily ruffled creamy-white florets have excellent substance and fine carriage on their graceful, slender stems. Daintiness is a good grower and a fast propagator.

(Mixed Sizes, 1-.50; 10-4.00)  
(Blbts. 10-.25; 100-2.00)

Starker Arrangement of STARLET



Wedgwood



**Emily's Birthday** ★ ★ (224) (Butt, 1955) (60 days) Named for Mrs. Emily Butt's birthday, having bloomed for the first time on her birthday. This was the first variety to bloom for us this year, blooming on July 1st. It is an apricot-salmon with a yellow throat dusted with scarlet.

(Mixed Sizes, 1-1.00; 5-4.00)  
(Blbts. 2-.25; 10-1.00)

**Flashlight** ★ ★ ★ (237) (Roberts, 1953) (75 days (Picardy x (Wings of Song x Maid of Orleans) X (Incense x Beacon)) Bright, flashy salmon-scarlet with a large, clean-cut yellow center which covers a major part of the lower petals.

(Mixed Sizes, 1-.75; 10-5.00)  
(Blbts. 10-.50; 100-4.00)

**Flicker** ★ ★ (221) (Kuhn, 1946) (75 days) (Orange Butterfly x Mystic) This jaunty little miniature is a glossy frilled orange embellished with a dash of red in the throat. Flicker behaves well.

(Mixed Sizes, 2-.25; 12-1.00)  
(Blbts. Pkg. .30)

**Goldette** ★ ★ ★ ★ (212) (Butt, 1954) (80 days) A beautiful little deep yellow glad with a touch of gold in the throat. It opens 6 lovely ruffled, carved florets on graceful, willowy stems. Len Butt may well be proud of Goldette.

(Mixed Sizes, 1-1.50; 10-10.00)  
(Blbts. 2-.25; 10-1.00)

**Ladykiller** ★ ★ ★ (221) (K & M, 1948) (75 days) The pert, smooth orange florets wear a polk dot of red in each throat. Opens up to five florets on a spike that should dazzle the ladies if it doesn't "slay" them! In all seriousness, Ladykiller is an attractive little glad despite its name.

(Mixed Sizes, 2-.25; 12-1.00)  
(Blbts. Pkg. .30)

**Lavender Petunia** ★ ★ ★ ★ (266) (Marek, 1952) (65 days) (Crystal x Abu Hassan) The best description of this striking miniature is found on page 36 where the color is reproduced with remarkable accuracy. The 4-5 airy, round, plain-petalled deep

lavender florets on thin wiry stems are dramatically contrasted by the large, icy-white throats. Crooks some but for arrangements you will welcome that graceful curve. Took a new hold on our affections last summer.

(Mixed Sizes, 1-.35; 12-2.50)  
(Blbts. 6-.25; 100-3.00)

**Little Gold** ★ ★ ★ ★ (212) (Fischer, 1950) (80 days) (Golden Poppy x Premier) Where in the glad world will you find a variety as bright and beautiful as Little Gold? You can search the color classes yet Little Gold stands alone in ruffled, orange perfection. Its petite florets have a butterfly-grace on the slender stems. A charming arrangement variety as depicted in our Starker composition on page 20. Grows easily and well. Opens best if stems are cut short.

(Mixed Sizes, 2-.25; 12-1.00)  
(Blbts. Pkg. .30)

**Little Sweetheart** ★ ★ ★ ★

(240) (Fischer, 1948) (80 days) (Sweetheart x Myrna) Little Sweetheart is a love-at-first-sight glad—full of that romantic type of beauty that one dreams about but rarely sees. It's waxy, snowy-white throat, pink school-girl complexion and excellence of form place it in the upper brackets of pulchritude. We never have enough bulbs to supply the demand. Try it with red roses.

(Mixed Sizes, 2-.50;  
10-2.00; 25-4.25)

**Pelletier D'Oisy** ★ ★ ★ (290) (Lem-oine) (65 days) This miniature is the oldest and the oddest variety in our catalogue. Pelletier D'Oisy is a rather plain-petalled, recurved chartreuse flower with a red throat blending to pepperings of red on the lips. It is a "natural" for exotic or sophisticated arrangements. Try it in a black container with variegated green and red croton leaves.

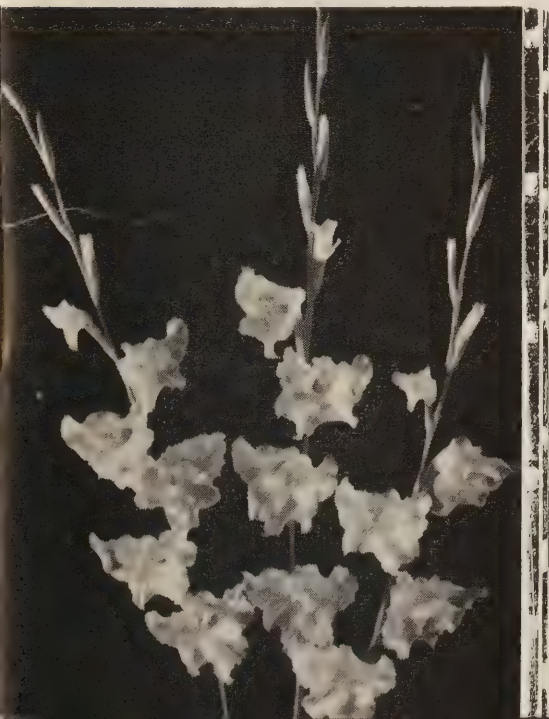
(Mixed Sizes, 2-.50; 10-2.00; 25-4.25)

**Peter Pan** ★ ★ ★ ★ (233) (Butt, 1952) (75 days) (Harlekin x Crinklette) A pleasing array of salmon-orange and ruffles, neatly carved on graceful stems.

(Mixed Sizes, 2-25; 12-1.00)  
(Blbts. 40-.25)

(More Miniatures on pages 38-39)

Starlet



Starker Arrangement of ROSE CHARM





*The three broad, sword like gladiolus leaves repeat the ascending rhythm of the LAVENDER PETUNIA spikes. Rhubarb and dwarf bleeding heart leaves tie a fancy bow above the recurved rim of the round bowl.*

**LAVENDER PETUNIA  
SPECIAL**  
5L — 5M — 5S  
(a \$3.10 value) for  
**\$2.45**

*This "inverted hat" shaped bowl with its wide rim and depressed crown solves the problem of using figurines that are not supposed to be in water. Our nice summer grouping is composed of dainty STARLET glads with white caladium leaves and three young birds to give life and action to the grouping. A bamboo base gives width. Note how the green markings in the foliage pick up the green of the bowl, thus making a more unified color grouping.*



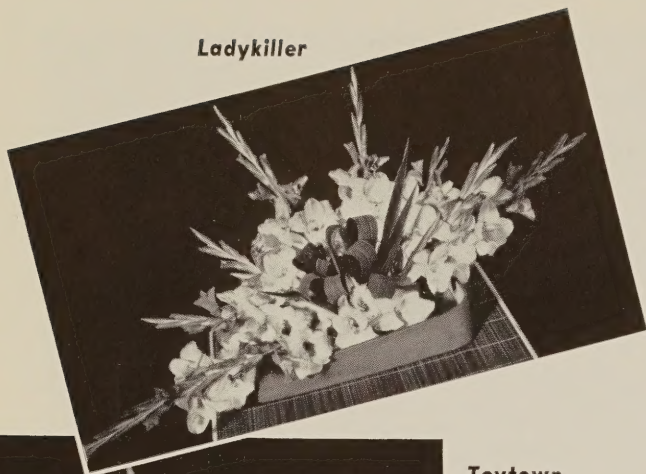


## Purple Burma

An usual composition, strikingly different from anything Carl Starker has created before. The yellow pottery is the perfect contrast for the rich PURPLE BURMA glad, gracefully arranged in a pewter-washed copper container. The simple horizontal lines of the 3 hosta leaves suggest an upward rhythm and at the same time offer a stark contrast with the fancy fluting and ruffles of the purple glad. Irish bells add weight and balance.



Ladykiller



Toytown



Carved Ivory



Little Sweetheart

**Red Button** ★ ★ (150) (Koerner, 1948)  
(65 days) A pleasing little red button it is! The color is clear and fiery. Just the thing to button together your glad composition.

(Mixed Sizes, 3-.50; 10-1.50)  
(Blbts. Pkg. .35)

**Redcap** ★ ★ (236) (Fischer, 1955) (80 days)  
(Little Sweetheart x Ruby)

Not a supremely beautiful glad but once it finds its way into your garden it is apt to stay awhile because of its general good behavior. The fiery red florets are round and crisp. A gold line surrounds each petal edge.

(Mixed Sizes, 1-.60; 10-3.00)  
(Blbts. 10-.50)

**Ruby** ★ ★ (252) (Kuhn, 1946) (70 days)  
(Kewpie Seedling x Seedling) A

glossy, deep red miniature of plain but graceful form. The trim spikes with 4-5 gleaming little florets have a quiet appeal that is hard to resist.

(Mixed Sizes, 2-.25; 12-1.00)  
(Blbts. Pkg. .30)

**Starlet** ★ ★ ★ (200) (Baerman, 1944) (80 days)  
((Zona x Baby Dec-

orah) X Queen of Bremen) A supremely graceful little glad, whose tiny, frilly, snow-sculptured blooms seem to perch like white butterflies on the thin, wiry stems. This bewitching little beauty is invaluable for wedding decorations and small table arrangements. A perfect cutter, producing uniformly tall miniature buggy-whip stems. See color cut page 36.

(Mixed Sizes, 2-.25; 12-1.00)  
(Blbts. Pkg. .30)

**SPECIAL OFFERS  
ON  
ARRANGEMENT GLADS**

(Each of these varieties was especially recommended by Mr. Starker.)

- 5 L Abu Hassan.....deep violet
- 5 L Atom.....scarlet
- 5 L Bo-Peep.....buff
- 5 L Crusader\*.....blotched white
- 5 L Cupid\*.....white
- 5 L Flicker.....orange
- 5 L Ladykiller\*.....blotched buff
- 3 L Lavender Petunia\*.....deep lavender
- 5 L Little Gold\*.....gold
- 5 L Pink Dots.....pink and white
- 1 L Redcap.....red
- 5 L Rose Charm\*.....rose
- 5 L Statuette.....yellow
- 5 L White Lace\*.....white
- 5 L Wedgwood\*.....lavender

Arrangement offer L, 69 large bulbs  
(a \$10.20 value) for \$7.50, labelled.

Arrangement offer M, 69 medium bulbs  
(a \$6.75 value) for \$4.50, labelled.

Combination Offer: Arrangement offer L  
and M, both for \$11.50.

\*Illustrated elsewhere in the catalog.

**Statuette** ★ ★ ★ ★ (211) (Butt, 1950)  
 (65 days) (Harlekin x Crinklette) It's easy to wax lyric over this delightful miniature yellow—the smallest, and in our view, the best of Len Butt's famous series. Really, Statuette is as cute as a hummingbird's nest. With what exquisite poise it carries its 8 tiny perfect florets! Carl Starker loved this glad for arrangements and so will you—it's a "natural" for the most charming compositions.

(Mixed Sizes, 2-.25; 12-1.00)  
 (Blbts. Pkg. .30)

**Toytown** ★ ★ ★ ★ (236) (Butt, 1954) (60 days) A brilliant light red with a flashy yellow beacon throat. The many round, heavily ruffled and heavy-substanted florets are gracefully placed on slender stems. One of our top favorites. Makes fine bulbs that propagate well.

(Mixed Sizes, 1-2.00; 5-7.00)  
 (Blbts. 2-.25; 10-1.00)

**Yellow Bird** ★ ★ (210) (Kuhn, 1946)  
 (80 days) (Primate x Unknown) A medium yellow that opens up to seven on tall, wiry spikes. The round, sprightly florets are gracefully recurved. A stalwart performer.

(Mixed Sizes, 2-.25; 12-1.00)  
 (Blbts. Pkg. .30)

"I believe Pink Diamond is the most beautiful Gladiolus I grew this year. I entered one spike of Pink Diamond at the Portland Glad Society at Camas, Washington. It received the Grand Champion Ribbon for the best spike in the show and also received the best Recent Introduction Ribbon."

—Edgar E. Searls, Washington.

"Incidentally, I was tremendously pleased with the bulbs I ordered from you last year. The gift bulbs of Ruffled Ebony, Pink Chiffon, and Southern Belle were so beautiful that now I am ordering all three. In a very trying, wet year they all did beautifully."

—Kathryn Brown, Kentucky.

"This is to thank you for the way in which you filled my order for glads. The corms look very nice, and I appreciate the extras you sent. I am learning to rely on your ratings of the different varieties (including your own originations), and I find your catalogue very

**Daintiness**



valuable for that feature alone, in addition to its other fine features."

—R. G. Vogan, Ontario.

"I think that your three introductions, Pink Diamond, Fire Opal, and Snowdrift, are absolutely beautiful. In spite of hot, dry weather here in Sheridan, they performed wonderfully well and showed no signs of wilting. Our best spikes of all three of them were absolutely breath-taking. And, the propagation was excellent."

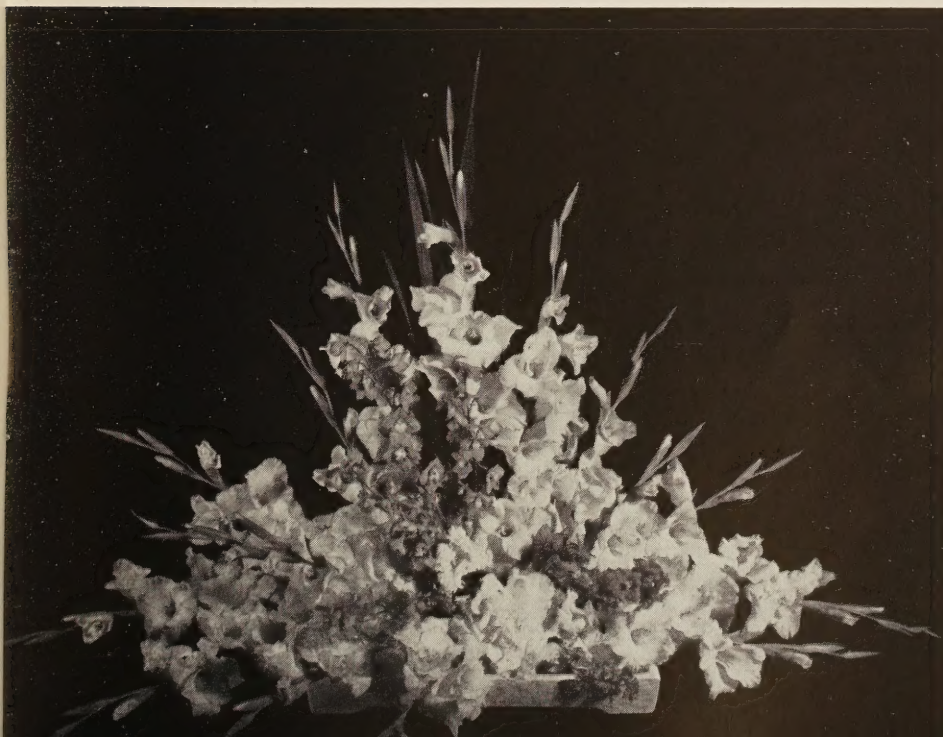
—Eli K. Clayson, Wyoming.

**"It's a Date"**

We'll meet you at our display at the Central International Gladiolus Show at the University of Wisconsin Field House in Madison, Wisconsin on August 15 and 16.

TRADES PUBLISHING CO., ALBERT LEA, MINN.  
 PRINTED BY LETTERPRESS IN U.S.A.

**White Lace**



Lavishly ruffled Snowdrift radiates from the focal point of gorgeous deep salmon begonias in our "inverted hat-type" bowl. Notice how the rhubarb leaves pick up the generous ruffling. The imported bird adds interest.

# SNOWDRIFT

## *Grand Champion* **OFFER**

5L - 10M - 10S

10 Bulblets

\$8.00 Value

for

**\$5.00**

